



Child Protection and Safeguarding Policy

September 2025



www.teaguesbridgeprimary.org



Teagues Bridge Primary School

Child Protection and Safeguarding Policy

Commitment to review

This policy will be flexible to change and will be reviewed on an ongoing basis to reflect where there are any changes in government legislation or any changes in the duty of statutory agencies in child protection and/or the wider safeguarding agenda. If it is not appropriate to refine the policy during the year, then this will be done as a matter of course on yearly basis by a named person responsible below, who shall be accountable for that action. This policy will also be updated to reflect any statutory changes arising from the Children’s Wellbeing and Schools Bill or future safeguarding legislation and statutory guidance.

Child Protection Policy and Safeguarding Policy 2025-2026 - Document Status			
Date published by Telford and Wrekin Safeguarding Partnership	25 th July 2025	Authors	Telford & Wrekin Council Education Safeguarding Team
Date of policy creation	1 st September 2025	Person responsible for creation	Sarah Abdulla, Natalie Woods, Mark Hale, Erin McInnes
Date of policy inception	2 nd September 2025		
Date of policy adoption by Governing Body	2 nd September 2025		
Date of policy review for 25/26	October 2026	Named responsibility	Sarah Abdulla, Natalie Woods, Mark Hale, Erin McInnes

Contents

Our safeguarding team	Page 4
Safeguarding intent, implementation and impact	Page 5
Summary & aims	Page 16
Part one: Safeguarding information	Page 18
Part two: Management of safeguarding	Page 61
Part three: Safer recruitment	Page 79
Appendix: Protective Security and Preparedness	Page 83

Our Safeguarding team

Safeguarding Supervisor & Designated teacher for CIC	Sarah Abdulla	
Designated Safeguarding Lead & Online safety lead & Early Help lead	Natalie Woods	
Deputy DSL	Mark Hale	
Deputy DSL & Deputy early help lead	Erin McInnes	
Safeguarding Governor	Reverend Kevin Evans	
Prevent Governor	Sharron Jones	

Our safeguarding approach

Intent

Safeguarding is our top priority and at the heart of all that we do at Teagues Bridge. We are committed to ensuring the welfare, safety and well-being of all children and staff within our school. Safeguarding is everyone's responsibility, and all staff are professional curious and share the mindset that it could happen here.

Teagues Bridge ensures they are aware, and staff are aware of the local safeguarding risks within the local community alongside Telford and Wrekin Safeguarding partnership priorities which includes early help, domestic abuse, neglect, exploitation, and child-on-child abuse. This ensures that we can fully support children and families.

We work hard to support our local community in whichever way we can, applying contextual safeguarding and working with families and agencies to bring about the best support for every situation. Our inclusion mentor and mental health lead work alongside children and families, offering early intervention to minimise the need of crisis intervention.

We intend to:

- Support all pupils who may have been or are at risk of abuse
- Provide a place where children feel safe and secure
- Ensure all staff and governors are trained and fully committed to safeguarding and promoting the welfare of all pupils
- Ensure Child Protection concerns are dealt with sensitively following policies and procedures
- Fully promote the Relationships and Behaviour and Anti-bullying policies
- To teach children about the importance of healthy and appropriate relationships as part of the impact of CSE and CCE within Telford and Wrekin.
- Take the view that 'It can happen here'.
- Create a school free of all kinds of discrimination, harassment and intolerance.
- Support all children at risk or with vulnerabilities including; SEND, EAL, LAC and PLAC children, mental health, children who are persistently or severely absent from education, children of parents who misuse drugs or alcohol, domestic abuse and parental illness.
- Reduce the impact of COVID-19 and other illness on children's safety through following Government and Public Health guidelines. We use assemblies and PSHE sessions to discuss the importance of personal hygiene.
- Fully support the mental health agenda and recognise the importance of mental health.
- Develop safe practice amongst all our pupils, e.g. while using the internet, while engaged in potentially hazardous or unhealthy activities or with respect of issues that may arise from others in the local community.
- Foster an ethos where children are listened to when discussing their concerns about safeguarding issues.
- Train all DSL's and cover safeguarding as part of the induction process.

- Make safeguarding the highest priority in our school. There is a safeguarding leaflet and card for visitors, DSL posters around school, as well as a children's safeguarding board, SAS Crew.
- Support parents with online safety
- Offer breakfast club and after school clubs to support children and families.
- Support families with uniform where needed.

Implementation

Safeguarding in our school is the responsibility of all staff, governors, parents/carers and pupils. Staff and governors are committed to undergoing annual safeguarding training and have an awareness of the correct policies and procedures to follow when concerns arise. Regular internal safeguarding training and updates, refreshers, Friday briefings and questionnaires are carried out with all members of staff. Safeguarding is an agenda item on the weekly briefing and SLT meetings. Half termly DSL supervision takes place. We understand that supervision is important process in safeguarding our DSL's. We have a facility on CPOMS which allows the reporter to click for supervision should they feel they need it.

We have a health and safety link governor, carrying out audits, talking to children and checking the single central record. Safeguarding reports feature in the termly headteachers report to governors and is discussed as part of the termly full governing body meetings: this ensures that safeguarding remains a high priority, compliance is checked out, and the culture of safeguarding is robust and effective.

The DSL's and the headteacher are the named attendance champions who work closely with the school office staff and the Education Welfare Officer to monitor and respond to concerns regarding attendance.

How we implement our safeguarding intent:

- The school values are linked to the school culture of respect and explicitly taught to children and demonstrated by staff as well as pupils.
- Developed a curriculum rich in British Values that teaches about diversity, equality and democracy.
- Our RSE curriculum prepares children for changes to their body and also about positive relationships and friendships.
- Mental health and emotional well-being is an important part of safeguarding and we have forms for both staff and children to complete and check in sessions every morning for children and every week with staff.
- Safeguarding children's board, called SAS (Safe and Secure) Crew. This represents a cross section of pupils from across upper Keystage 2. These pupils work with the DSL's and Headteacher to respond to areas of need and educate their peer about safeguarding.
- We have a curriculum that helps children understand how school keeps them safe whilst in the classroom and beyond. It is embedded into lessons through the jigsaw materials, assemblies, themed days/weeks and focused workshops from external providers, e.g., NSPCC, Snap trap

and Loud mouth, proving pupils with the skills to equip them to stay safe and know how to respond to personal concerns.

- SAS crew deliver workshops around Child-on-Child abuse and the PANT campaign for KSI.
- Rigorous risk assessments are in place to support Child-on-Child abuse, there is also a very detailed action plan and support plan to support both parties involved in any Child-on-Child abuse incident.
- Safeguarding key messages are shared with parents /carers via the Friday newsletter. Top tips are regularly shared with parents on E-safety and reminders to staff about the importance of professional curiosity and record keeping.
- Data is collected from pupil voice, parent questionnaire and staff questionnaire, these are linked to specific areas of safeguarding.
- SAS crew speak regularly to children about where they feel safe and where they don't feel safe.

Impact:

- Parents are confident to raise concerns with the school.
- Staff are confident to follow the whistleblowing policy and raise concerns.
- Children are confident to raise concerns regarding their friends, in relation to online safety and child-on-child abuse.
- Children can confidently talk about the nine protected characteristics related to race, gender, and sexuality. This has been noted by our school advisor relating to personal development, behaviour and safety.
- Supervision sessions allow staff to reflect on actions and to raise worries they may have over a certain case. It holds DSLs to account ensuring actions are met in a timely manner.
- Regular monitoring of CPOMS allows the DSL team to identify trends and areas for development in terms of record keeping.
- The link governor of safeguarding checks that we are compliant with safeguarding; checking the single central record termly, monitoring the safeguarding page on the website and checking policies and procedures are up-to-date and relevant.
- Pupil questionnaire conducted in March 2023 provide a reassuring picture that children feel safe at school. 100% of children said they understand Child-on-Child abuse and know how to report this.
- The school's effective safeguarding culture is confirmed by the local authority audit in July 2023. Outcomes identify the school's commitment to making safeguarding a priority.

Further evidence to support our safeguarding ethos



Safeguarding Offer at Teagues Bridge

At Teagues Bridge Primary School we are committed to safeguarding children and young people, and we expect everyone who works in our school to share this commitment.

Adults in our school take all welfare concerns seriously and encourage children and young people to talk to us about anything that may worry them.

The school recognises the importance of providing an ethos and environment that will help children to feel safe, secure and respected; encourage them to talk openly; and enable them to feel confident that they will be listened to.

In order to help promote this ethos within school, we have a number of resources which provide clear information and support to all pupils and stakeholders.

We also have our safeguarding champions (SAS Crew) who other children and staff can identify by their bright yellow jackets. They meet regularly, attend Governor meetings to discuss any safeguarding issues and participate in assemblies.

Displays

Across our school site, safeguarding displays are an integral fixture. Our displays which are aimed at pupils and parents/guardians are in our main school corridor. Our staff safeguarding displays are present in the staffroom. All the displays are regularly updated to reflect changes in policy/procedure. They are regularly referred to and have an element of interaction to ensure they don't become 'wallpaper' but instead are useful sources of information.

School Policy

Purpose of our Safeguarding Policy

Teagues Bridge Primary School's safeguarding policy provides clear direction to all school stakeholders about expected practice in dealing with safeguarding issues. It makes explicit the school's commitment to the development of good practice and effective procedures, ensuring that safeguarding concerns and referrals are handled sensitively, professionally and in a way that supports and protects the needs of the child.

There are three main aims to our Child Protection Policy:

Prevention: by creating a positive school atmosphere and providing high quality teaching and pastoral support to pupils;

Protection: by following agreed procedures and ensuring staff are appropriately recruited, trained and supported to respond appropriately and sensitively to Child Protection concerns;

Support: by providing support for pupils and school staff and for children who may have been or are being abused.

All those working in education can contribute to the safeguarding and protection of the welfare of a child in need.

According to the DfE, safeguarding and promoting the welfare of children is defined as:

- protecting children from maltreatment;
- preventing impairment of children's health or development;
- ensuring children are growing up in circumstances consistent with the provision of safe and effective care; and
- taking action to enable all children to have the best outcomes.

Child protection is a part of safeguarding and promoting welfare. It refers to the activity that is undertaken to protect specific children who are suffering, or are likely to suffer, significant harm.

Safeguarding and promoting the welfare of children is everyone's responsibility at Teagues Bridge Primary School.

Everyone who comes into contact with children and their families and carers has a role to play in safeguarding children. In order to fulfil this responsibility effectively, all professionals should make sure their approach is child centred. This means that they should consider, at all times, what is in the best interests of the child.

This policy applies to all who come into contact with children at Teagues Bridge Primary School including:

- Teachers
- Teaching assistants
- Administrative assistant

- Supply teachers
- Pupils
- Lunchtime supervisors
- Visitors/volunteers
- Adult helpers
- Governors

If in doubt, any one with concerns should seek advice from the Designated Safeguarding Leads or contact Family Connect on 01952 385385.

Safeguarding Policies:

- KCSIE September 2025
- Mental Health Policy
- Child-on-Child abuse and managing allegations
- Drugs and Substance misuse
- Safer use of technology
- Complaints
- Safer recruitment
- Alternative provision
- Behaviour policy
- Whistle Blowing Policy
- Suicide Intervention
- Use of reasonable force
- Social Media Policy
- Working together to safeguard children

Communication with Parents

Our school will always discuss concerns with parents/carers and consent for any referrals should be sought unless to do so would:

- Place the child at risk of significant harm or further risk of significant harm.
- Place a vulnerable adult at risk of harm.
- Compromise any enquiries that need to be undertaken by children's social care or the police.

The school will endeavour to ensure that parents have an understanding of the responsibilities placed on the school and staff for safeguarding children.

Curriculum

Child safety issues and child protection will be addressed through the curriculum where appropriate, especially through PSHE, Computing and E-Safety, Citizenship, Sex and Relations Education (SRE) and British values.

We use a variety of resources and approaches to teach the children how to keep themselves safe, build their resilience and manage risks.

The curriculum, and in particular the personal, social and health education development strand of the curriculum, includes an emphasis on relationships (relationships and sex education), building confidence and resilience in pupils and in developing preventative strategies to ensure their own protection and that of others. Opportunities are provided for pupils to develop the skills and strategies they need to stay safe from abuse, including age appropriate discussions about healthy relationships, their bodies and being able to say no to requests that they do not want to carry out.

The curriculum, and in particular the personal, social and health education development strand of the curriculum, includes an emphasis on relationships (relationships and sex education), building confidence and resilience in pupils and in developing preventative strategies to ensure their own protection and that of others. Opportunities are provided for pupils to develop the skills and strategies they need to stay safe from abuse, including age appropriate discussions about healthy relationships, their bodies and being able to say no to requests that they do not want to carry out. Clear advice and guidance is built into the curriculum to ensure that pupils understand that there is a range of contacts they can turn to for advice and support and that they know where and how to report abuse.

E-Safety

At Teagues Bridge Primary School the safeguarding of pupils is a very high priority. We are committed to ensuring our pupils are safe in school and online.

By giving the pupils the knowledge to safeguard themselves and their personal information we are empowering them with a vital life skill.

What is E-Safety?

E-safety is the safe use of information systems and electronic communications, including the internet, mobile phones and games consoles. It is important that children and young people understand the benefits, risks and responsibilities of using information technology.

- e-safety concerns safeguarding children and young people in the digital world.
- e-safety emphasises learning to understand and use new technologies in a positive way.
- e-safety is less about restriction and more about education about the risks as well as the benefits so we can feel confident online.

- e-safety is concerned with supporting children and young people to develop safer online behaviours both in and out of school.

E-safety forms part of our curriculum and pupils are regularly reminded of how to stay safe online.

If you have any concerns speak to any member of staff.

Using the Internet safely at home

Whilst many Internet Service Providers offer filtering systems to help you safeguard your child at home, it remains surprisingly easy for children to access inappropriate material including unsuitable texts, images and movies.

Parents/guardians are advised to set the security levels within Internet Browsers with this in mind.

Locating the device to access the Internet in a family area will enable you to supervise children as they use the Internet. However, don't deny your child the opportunity to learn from the wide variety of material and games available on the Internet. Instead, set some simple rules for keeping them safe and make sure they understand the importance of these rules.

Simple, suggested rules for keeping your child safe

- ask your permission before they use the Internet
- only use websites you have chosen together or a child friendly search engine
- only email people they know (perhaps an address book would be useful)
- ask permission before opening an email sent by someone they don't know
- do not use Internet chat rooms
- do not use their real name when using games on the Internet (perhaps encourage them to create a suitable nick name)
- never give out a home address or personal contact details
- never tell someone where they go to school
- never send an image of themselves, their home or school
- never arrange to meet someone they have 'met' on the Internet
- only use a webcam with people they know
- ask them to tell you immediately if they see anything they are unhappy with

Using these rules

Go through the rules with your child and ensure they understand what you suggest. It is also a good idea to regularly check the Internet sites your child is visiting e.g. by clicking on History and Favourites. Please reassure your child that you want to keep them safe rather than take Internet access away from them.

Below is a link to some free online expert advice specifically for parents on supporting their child in the digital world. They offer ideas on a range of ideas for staying safe online:

<http://parentinfo.org/>

Other links that you may find useful are:

Childline

ChildLine 08001111: get help and advice about a wide range of issues, talk to a counsellor online, send ChildLine and email or post on the message boards on the link below:

<https://www.childline.org.uk>

Cyber-bullying

Cyber bullying is any form of bullying which takes place online or through smartphones and tablets. Social networking sites, messaging apps, gaming sites and chat rooms such as Facebook, Xbox Live, Instagram, YouTube, Snapchat and other chat rooms can be great fun and a positive experience, but they can be used as platforms to upset and bully individuals.

Tips and advice

- If you post abuse about anyone else online or if you send threats, you can be traced by the police without any difficulty. Every time you visit a website or make a posting, your internet service provider, Sky, BT or Virgin, has an electronic note of your activity. Even if you create an anonymous email address you can still be traced.
- Keep safe by using unusual passwords. Use a combination of letters, lowercase, uppercase, symbols and numbers. Don't use any part of your name or email address and don't use your birth date either because that's easy for people who know you to guess. Don't let anyone see you signing in and if they do, change the password as soon as you can.
- If you are using a public computer such as one in a library or computer shop, be sure to sign out of any web service you are using before leaving the computer so that you can protect your privacy.
- Being bullied online can affect someone enormously. Being bullied can impact on a person's self-esteem, confidence and social skills. Try to consider the impact your words may have and think twice before posting.
- Think twice before you post anything online because once it's out there you can't take it back.

The documents below provide further information on cyber-bullying.

[Cyber-bullying – Top tips for parents](#)

[Cyber-bullying – Factsheet](#)

[Cyber-bullying – Grooming factsheet](#)

[Cyber-bullying – Inappropriate websites](#)

If you have any concerns speak to any member of staff.

Social Media

The more you know about the kind of social networking sites your children belong to and what information they like to share, the more likely you'll be able to keep them safe:

- The age limit to join most social networking sites is 13
- The most popular social networks include Facebook, Instagram, YouTube, Twitter, TikTok and Snapchat; sites aimed at younger children, like Club Penguin and Moshi Monsters, also have a social networking element
- Many sites include an instant message function that allows private conversations between site members
- You can create 'privacy settings' on most social networking sites, so only close friends can search for your children, tag them in a photograph or share what they post
- Most social networking sites have an app, which means your children will have access to the social network from their (or your) smartphone or tablet
- Information shared between friends can be easily copied and may spread widely
- It isn't easy to take back information once it's online, and it can be impossible to recover after someone has shared it
- Not everyone your child meets online will be who they say they are
- Chat rooms and forums are one of the places that online groomers visit to connect with children; they can also be places where people use a lot of sexual language and engage in online flirting.

The documents below provide further information on social media.

[Tik Tok safety poster for parents](#)

[Instagram safety poster for parents](#)

[Instagram safety checklist](#)

[Social media guidance for parents UKCCIS](#)

Other Useful Links:

- [Know It All](#) Free e-safety resources for teachers and parents
- [Think U Know](#) Guide to internet safety and safe surfing for young people.
- [CEOP](#) News and Articles about e-safety

Child Sexual Exploitation

Child Sexual Exploitation (CSE) is a form of sexual abuse which sees children/young people being manipulated or coerced into sexual activity for receiving 'something' such as; gifts, money, food,

attention, somewhere to stay etc. Technology is very often used to groom victims. This may occur through social networking sites and mobile phones with internet access. CSE has gained a large amount of media attention over the last year as lots of services involved with children and young people have noticed a big rise in cases involving CSE.

Charities such as [NSPCC](#) and [Barnardo's](#) have been campaigning to raise the profile of this form of child abuse.

Female Genital Mutilation (FGM)

In April 2014 every school in England received new safeguarding guidelines and detailed information on identifying and responding to Female Genital Mutilation. FGM is a procedure carried out on young girls between the ages of infancy and 15 years of age.

Female Genital Mutilation is classified as a form of Child Abuse in the UK. It therefore makes the procedure of it a serious Child Protection issue. It is illegal for anyone to perform FGM in the UK or to arrange for a child to be transported to another country for the procedure. The maximum sentence for carrying out FGM or helping it to take place is 14 years in prison.

There is lots of information and support available online for parents/carers concerned about this subject or if you know someone who is at risk:

- Contact the Police if you think that a girl or young woman is in danger of FGM and is still in the UK.
- Contact the Foreign and Commonwealth Office (020 7008 1500) if she's already been taken abroad.

The NSPCC has detailed advice on how to spot the signs, symptoms and effects of FGM and provides support for people who are concerned about a child or who have been affected themselves. The link to the website is below.

[NSPCC FGM](#)

Safeguarding board see address

<http://www.telfordsafeguardingboard.org.uk/> for contact details of the LADO, local Authority Designated Officer.
01952385385 (Family Connect)



Summary & aims

1. We have regard for the statutory guidance from the Department for Education (DfE) issued under Section 175 of the Education Act 2002 (as amended), the Education (Independent School Standards) Regulations 2014, the Non-Maintained Special Schools (England) Regulations 2015, and the Apprenticeships, Skills, Children and Learning Act 2002 (as amended). This policy has been developed in line with legal obligations, including, where applicable, the Human Rights Act 1998, the European Convention on Human Rights, the Domestic Abuse Act 2021, the Children and Social Work Act 2017, the Equality Act 2010, and the Public Sector Equality Duty.
2. This policy is aligned with the statutory guidance Keeping Children Safe in Education (KCSIE) 2025, Working Together to Safeguard Children 2023, the Early Years Foundation Stage (EYFS) Framework 2025, and the Relationships, Sex and Health Education (RSHE) Statutory Guidance July 2025. It reflects the latest definitions, expectations, and safeguarding responsibilities for all staff, volunteers, and governors in educational settings.
3. We will also follow the DfE's What to do if you are Worried a Child is Being Abused – Advice for Practitioners. We recognise that the NSPCC website provides additional information on abuse, neglect, exploitation, and indicators of harm.
4. This policy is aligned with the statutory guidance Keeping Children Safe in Education 2025, which comes into force on 1 September 2025. It reflects the latest definitions, expectations, and safeguarding responsibilities for all staff, volunteers, and governors in educational settings.
5. We provide early years provision and adhere to the Statutory Framework for the Early Years Foundation Stage for Group and School-Based Providers (2025), which sets the standards for learning, development, and care for children from birth to five. This includes compliance with Section 3 – Safeguarding and Welfare Requirements.
6. All child protection matters will be dealt with in line with the arrangements of [Telford and Wrekin Safeguarding Partnership \(TWSP\)](#) and [West Midlands Child Protection and Safeguarding Procedures](#) or, if relevant, the safeguarding partnership area children reside in, under the care of or with designated responsibility.
7. This policy replaces the previous policy of October 2025.
8. We have a duty of care to all pupils and their families, and staff. The safety and protection of all children is of paramount importance to all those involved in education. The aim of this policy is to make all within our setting feel safe, promote their welfare and have clear roles and responsibilities in place for that to happen. We are committed to inter-agency working to keep children safe. All of our community believe that our setting should provide a caring, positive, safe and stimulating environment, which promotes the social, physical and moral development of the individual child.

9. The governing body will ensure that **all staff** have read at least part one of KCSIE (or annex A if appropriate) and those working with children will also read Annex B of KCSIE. All members of the governing body and the Designated Safeguarding Lead (DSL) and their deputies will read all parts of KCSIE, relevant parts of Working Together to Safeguard Children and Part three: safeguarding and welfare of the EYFS. We will maintain a record of this. We recognise that best practice would be for all staff to be acquainted with all parts of KCSIE. The governing body will ensure that mechanisms are in place to assist staff to understand and discharge their role and responsibilities as set out in Part one (or Annex A if appropriate) of KCSIE.

10. Our policy and all supplementary policies and procedures are published on our website for all to view. This policy reflects the changes outlined in Annex F of Keeping Children Safe in Education 2025, including updates on gender questioning children, online safety, and DSL responsibilities. It will be reviewed annually and updated in line with any further statutory changes.

Part one: Safeguarding information

A child centred and coordinated approach to safeguarding

All those who are part of our school/college, including our staff are an important part of the wider safeguarding system for our pupils.

It is **everyone's** responsibility to safeguard and promote the welfare of children; this includes everyone who comes into contact with children and their families. Everyone will consider, at all times, what is in the best interest for the child and ensure their practice is child centred. This responsibility is set out in all staff's job descriptions.

No one will manage concerns about a child in isolation. **Everyone** will identify concerns, share information and take prompt action to help children and families receive the right help at the right time.

For the purpose of this policy, safeguarding and promoting the welfare of children is defined as:

- Providing help and support to meet the needs of children as soon as problems emerge.
- protecting children from maltreatment, whether that is within or outside the home, including online.
- preventing impairment of children's mental and physical health or development.
- ensuring that children grow up in circumstances consistent with the provision of safe and effective care; and
- taking action to enable all children to have the best outcomes.

For children in the early years, we follow the safeguarding and welfare requirements set out in Section 3 of the EYFS 2025 framework. This includes ensuring:

- All staff working with children under 5 are suitable and appropriately vetted.
- At least one person with a current paediatric first aid certificate is on site at all times.
- Ratios and supervision requirements are met in line with statutory guidance.
- Risk assessments are carried out for all activities and environments.
- Staff are alert to signs of abuse and neglect and know how to respond appropriately.

'Children' includes everyone under the age of 18.

The role of our staff

Our staff will identify concerns early, provide help for children, promote children's welfare and prevent concerns from escalating. They will provide a safe environment in which children can learn.

We are committed to identifying children who may benefit from early help. Early help means providing support as soon as a problem emerges at any point in a child's life.

The DSL and their deputies role is to advise on safeguarding concerns, support others to carry out their safeguarding duties and liaise with other agencies.

All teachers, including the Headteacher in accordance with the Teachers' Standards 2012 will safeguard children's well-being and maintain public trust in the teaching profession as part of their professional duties.

Staff training and induction

All staff will receive an induction, so they are aware of our safeguarding systems. This will include the child protection policy, child-on-child abuse policy and procedures, behaviour policy, staff behaviour policy, safeguarding response to children who are absent from education and role of the DSL and CSE lead (including the identity of the DSL and any deputies). We will provide copies of policies and a copy of Part one (or Annex A, if appropriate) or KCSIE to all staff at induction. We will maintain a record of induction.

Staff will receive appropriate safeguarding and child protection training (including online safety which, amongst other things, includes an understanding of the expectations, applicable roles and responsibilities in relation to filtering and monitoring) at induction. This training will be refreshed every three years except for staff working with early years children, their training will be refreshed every two years.. All staff will also receive at least annual child protection and safeguarding updates (including online safety), to provide them with relevant skills and knowledge to safeguard children effectively. All staff will receive annual training in child sexual exploitation awareness. We will ensure staff safeguarding training is integrated, aligned and considered as part of whole school safeguarding approach and wider staff training and curriculum planning and training helps staff to understand local safeguarding procedures. We will maintain a record of training.

All staff will be made aware of the following:

- Telford & Wrekin early help process and their role within it;
- the process for making referrals to children's social care and for statutory assessments under the Children Act 1989, especially section 17 (children in need) and section 47 (a child suffering, or likely to suffer, significant harm) and the role they might be expected to play in such assessments;
- what to do if a child tells them he/she is being abused, exploited or neglected;
- how to reassure victims they are being taken seriously and that they will be supported and kept safe;
- that children may not feel ready or know how to tell someone that they are being abused, exploited or neglected, and/or they may not recognise their experiences as harmful;
- staff should be professionally curious and speak to the DSL or their deputies if they have concerns about a child, and
- staff should build trusted relationships with children which facilitate communication.

We will encourage staff to consider the TWSP [briefing on professional curiosity](#).

Staff know how to manage the requirement to maintain an appropriate level of confidentiality. This means only involving those who need to be involved, such as the DSL (or a deputy) and children's social care. Staff will never promise a child that they will not tell anyone about a report of any form of abuse, neglect and/or exploitation because this may ultimately not be in the best interests of the child. All staff will reassure victims that they are being taken seriously and that they will be supported and kept safe. A victim will never be given the impression that they are creating a problem by reporting abuse, sexual violence or sexual harassment. Nor will a victim ever be made to feel ashamed for making a report. Staff will record how they have reassured victims.

Early help

We believe that **any** child may benefit from early help, and we ensure that all staff are alert to the potential need for early help for a child who:

- is disabled or has certain health conditions and has specific additional needs;
- has special educational needs (whether or not they have a statutory Education, Health and Care Plan);
- has a mental health need
- is a young carer;
- is showing signs of being drawn in to anti-social or criminal behaviour, including gang involvement and association with organised crime groups or county lines;
- is frequently missing/absent from education, care or from home;
- is at risk of modern slavery, trafficking or exploitation;
- has experienced multiple suspensions, is at risk of being permanently excluded from school and in alternative provision or a pupil referral unit;
- is at risk of being radicalised or exploited;
- is at risk of modern slavery, trafficking, sexual and/or criminal exploitation;
- has a parent or carer in custody, or is affected by parental offending;
- is in a family circumstance presenting challenges for the child, such as drug and alcohol misuse, adult mental health issues and domestic abuse;
- is misusing drugs or alcohol themselves;
- has returned home to their family from care;
- is at risk of so-called 'honour'-based abuse, such as Female Genital Mutilation or Forced Marriage;
- is a privately fostered child; and
- is persistently absent from education, including persistent absences for part of the day.

Our early help offer is aligned with the expectations of Working Together to Safeguard Children 2023, ensuring that children and families receive the right support at the right time. We use the Telford & Wrekin Threshold Guidance to inform our decisions and work collaboratively with partners to deliver integrated support.

We ensure that all children that disclose that they have taken an overdose go to the Emergency Department at the nearest hospital to be checked by a medical professional in line with the TWSP Procedure for the management of overdoses, involving children within schools and colleges.

Young carers

Legislation defines a 'young carer' as '...a person under 18 who provides or intends to provide care for another person (of any age, except where that care is provided for payment, pursuant to a contract or as voluntary work).' A young carer might look after someone because they are sick or have a disability or mental health issues. Or, if a parent or family member has an alcohol or drug problem, they may be unable to care for themselves or anyone else.

We recognise the responsibilities of young carers are wide and varied but can include:

- practical tasks, such as cooking, housework and shopping;
- physical care, like helping someone out of bed;
- emotional support, including talking to someone who is distressed;
- personal care, such as helping someone dress;
- managing the family budget and collecting prescriptions;
- helping to give medicine;
- helping someone communicate, and
- looking after brothers and sisters.

Caring for someone can be very isolating, worrying and stressful for children. For young carers, this can negatively affect their experience in education. We recognise that many young carers will regularly miss school/college and that this can have a lasting effect on their life chances.

Our aim is to work with families and other agencies to identify young carers to ensure that their needs are assessed and where necessary supported. We will work with the Telford and Wrekin Young Carers Service to do this.

Abuse, neglect and exploitation

All staff are trained on the indicators of abuse, neglect and exploitation and understand children can be at risk of harm inside and outside of our school/college, inside and outside of the home, and online. Staff will exercise professional curiosity and know what to look out for because this is vital for the early identification of abuse and neglect to identify cases of children who may be in need of help or protection.

We believe that abuse, neglect, exploitation and safeguarding issues are rarely stand-alone events. All staff, but especially the DSL and their deputies will consider whether children are at risk of abuse or exploitation in situations outside their families. Extra-familial harms take a variety of different forms and children can be vulnerable to multiple harms.

All staff are aware that technology is a significant component in many safeguarding and well-being issues. We understand children are at risk of abuse online as well as face-to-face. In many cases, abuse will take place concurrently via both online and offline. Children can also abuse other children online, this can take the form of abusive, harassing, and misogynistic/misandrist messages, the non-consensual sharing of indecent images, especially around chat groups, and the sharing of abusive images and pornography, to those who do not want to receive such content.

Indicators of abuse and neglect

Abuse: a form of maltreatment of a child. Somebody may abuse or neglect a child by inflicting harm or by failing to act to prevent harm. Harm can include ill treatment that is not physical as well as the impact of witnessing ill treatment of others. This can be particularly relevant, for example, in relation to the impact on children of all forms of domestic abuse, including where they see, hear or experience its effects. Children may be abused in a family or in an institutional or community setting by those known to them or, more rarely, by others. Abuse can take place wholly online, or technology may be used to facilitate offline abuse. Children may be abused by an adult or adults or by another child or children.

Physical abuse: a form of abuse which may involve hitting, shaking, throwing, poisoning, burning or scalding, drowning, suffocating or otherwise causing physical harm to a child. Physical harm may also be caused when a parent or carer fabricates the symptoms of, or deliberately induces, illness in a child.

The fabrication or induction of illness (FII) in children is a relatively rare form of child abuse. Where concerns exist about FII, it requires professionals to work together, evaluating all the available evidence, in order to reach an understanding of the reasons for the child's signs and symptoms of illness. At all times professionals need to keep an open mind to ensure that they have not missed a vital piece of information'. We adopt the guidance Safeguarding children in whom illness is fabricated or induced and TWSP FII Best Practice Guidance.

Emotional abuse: the persistent emotional maltreatment of a child such as to cause severe and adverse effects on the child's emotional development. It may involve conveying to a child that they are worthless or unloved, inadequate, or valued only insofar as they meet the needs of another person. It may include not giving the child opportunities to express their views, deliberately silencing them or 'making fun' of what they say or how they communicate. It may feature age or developmentally inappropriate expectations being imposed on children. These may include interactions that are beyond a child's developmental capability as well as overprotection and limitation of exploration and learning or preventing the child from participating in normal social interaction. It may involve seeing or hearing the ill-treatment of another. It may involve serious bullying (including cyberbullying), causing children frequently to feel frightened or in danger, or the exploitation or corruption of children. Some level of emotional abuse is involved in all types of maltreatment of a child, although it may occur alone.

Sexual abuse: involves forcing or enticing a child or young person to take part in sexual activities, not necessarily involving a high level of violence, whether or not the child is aware of what is happening. The activities may involve physical contact, including assault by penetration (for example

rape or oral sex) or non-penetrative acts such as masturbation, kissing, rubbing and touching outside of clothing. They may also include non-contact activities, such as involving children in looking at, or in the production of, sexual images, watching sexual activities, encouraging children to behave in sexually inappropriate ways, or grooming a child in preparation for abuse. Sexual abuse can take place online, and technology can be used to facilitate offline abuse. Sexual abuse is not solely perpetrated by adult males. Women can also commit acts of sexual abuse, as can other children. The sexual abuse of children by other children is a specific safeguarding issue in education and all staff are aware of the settings policy and procedures of dealing with this.

Neglect: the persistent failure to meet a child's basic physical and/or psychological needs, likely to result in the serious impairment of the child's health or development. Neglect may occur during pregnancy, for example, as a result of maternal substance abuse. Once a child is born, neglect may involve a parent or carer failing to: provide adequate food, clothing and shelter (including exclusion from home or abandonment); protect a child from physical and emotional harm or danger; ensure adequate supervision (including the use of inadequate caregivers); or ensure access to appropriate medical care or treatment. It may also include neglect of, or unresponsiveness to, a child's basic emotional needs.

Safeguarding issues

All staff are trained on safeguarding issues that can put children at risk of harm.

Child-on-child abuse

All staff are aware that children can abuse other children. This can happen inside or outside of our setting and online.

All staff will be trained in our policy and procedures with regard to child-on-child abuse and the important role they have to play in preventing it and responding to where they believe a child may be at risk from it.

All staff understand that even if there are no reports in our setting it does not mean it is not happening, it maybe abuse is just not being reported. When staff have **any** concerns regarding child-on-child abuse, even if there are no reports in our setting, they should still speak to the DSL (or deputy).

All staff are expected to challenge inappropriate behaviours between peers, examples of which are listed below, that are actually abusive in nature. Downplaying certain behaviours, for example dismissing sexual harassment as "just banter", "just having a laugh", "part of growing up" or "boys being boys" can lead to a culture of unacceptable behaviours, an unsafe environment for children and in worst case scenarios a culture that normalises abuse leading to children accepting it as normal and not coming forward to report it. Our procedures reflect the guidance in Part Five of KCSIE 2025, ensuring that all reports are taken seriously, victims are supported, and appropriate

safeguarding and disciplinary actions are taken. We recognise that child-on-child abuse can occur in any setting and must never be tolerated or passed off as “banter” or “part of growing up.”

Child-on-child abuse is most likely to include, but may not be limited to:

- bullying (including cyberbullying, prejudice-based and discriminatory bullying);
- abuse in intimate personal relationships between children (sometimes known as ‘teenage relationship abuse’);
- physical abuse such as hitting, kicking, shaking, biting, hair pulling, or otherwise causing physical harm (this may include an element of online which facilitates, threatens and/or encourages physical abuse);
- sexual violence, such as rape, assault by penetration and sexual assault (this may include an online element which facilitates, threatens and/or encourages sexual violence);
- sexual harassment, such as sexual comments, remarks, jokes and online sexual harassment, which may be stand-alone or part of a broader pattern of abuse;
- causing someone to engage in sexual activity without consent, such as forcing someone to strip, touch themselves sexually, or to engage in sexual activity with a third party;
- consensual and non-consensual sharing of nudes and semi nudes images and or videos (also known as sexting or youth produced sexual imagery);
- upskirting, which typically involves taking a picture under a person’s clothing without their permission, with the intention of viewing their genitals or buttocks to obtain sexual gratification, or cause the victim humiliation, distress or alarm, and
- initiation/hazing type violence and rituals (this could include activities involving harassment, abuse or humiliation used as a way of initiating a person into a group and may also include an online element).

We will actively seek to raise awareness of and prevent all forms of child-on-child abuse by:

- educating all governors, our senior leadership team, staff, students, and parents about this issue;
- educating children about the nature and prevalence of child-on-child abuse, positive, responsible and safe use of social media, and the unequivocal facts about consent, via the curriculum;
- engaging parents on these issues;
- supporting the on-going welfare of the student body by drawing on multiple resources that prioritise student mental health, and by providing in-school/college counselling and therapy to address underlying mental health needs;
- working with governors, senior leadership team, and all staff, students and parents to address equality issues, to promote positive values, and to encourage a culture of tolerance and respect amongst all members of the school/college community;
- creating conditions in which our students can aspire to, and realise, safe and healthy relationships fostering a whole-school/college culture;
- responding to cases of child-on-child abuse promptly and appropriately; and

- ensuring that all child-on-child abuse issues are fed back to the DSL and deputies so that they can spot and address any concerning trends and identify students who may be in need of additional support.

We will actively engage with TWSP in relation to child-on-child abuse, and work closely with, for example, children's social care, the police and other education settings. The relationships our setting has built with these partners is essential to ensuring that we are able to prevent, identify early, and appropriately handle cases of child-on-child abuse. The DSL (or a deputy) will regularly review behaviour incident logs which can help to identify any changes in behaviour and/or concerning patterns or trends at an early stage.

We recognise that any child can be vulnerable to child-on-child abuse due to the strength of peer influence, especially during adolescence, and staff should be alert to signs of such abuse among all children. Individual and situational factors can increase a child's vulnerability to abuse by their peers. We know that research suggests:

- child-on-child abuse may affect boys differently from girls (i.e. that it is more likely that girls will be victims and boys perpetrators). However, all child-on-child abuse is unacceptable and will be taken seriously;
- children with Special Educational Needs and/or Disabilities (SEND) are three times more likely to be abused than their peers without SEND, and
- some children may be more likely to experience child-on-child abuse than others as a result of certain characteristics such as sexual orientation, ethnicity, race or religious beliefs.

Child-on-child sexual violence and sexual harassment

All those who are part of our community believe that sexual violence and sexual harassment is not acceptable and will not be tolerated.

We understand that sexual violence and sexual harassment can occur between two or more children **of any age and sex**. It can occur online. It can also occur through a group of children sexually assaulting or sexually harassing a single child or group of children. Sexual violence and sexual harassment exist on a continuum and may overlap.

We recognise that children who are victims of sexual violence and sexual harassment will likely find the experience stressful and distressing. This will, in all likelihood, adversely affect their educational attainment and will be exacerbated if the alleged perpetrator(s) attends our setting.

We will work to ensure our whole-school/college community are aware of the importance of:

- challenging inappropriate behaviours;
- making clear that sexual violence and sexual harassment is not acceptable, will never be tolerated and is not an inevitable part of growing up;
- not tolerating or dismissing sexual violence or sexual harassment; and,

- challenging physical behaviours (potentially criminal in nature), such as grabbing bottoms, breasts and genitalia, pulling down trousers, flicking bras and lifting up skirts. Dismissing or tolerating such behaviours risks normalising them.

For the purpose of this policy, we use the term 'victim', 'alleged perpetrator(s)' or where appropriate 'perpetrator(s)'. Ultimately, the use of appropriate terminology will be determined, as appropriate, on a case-by-case basis.

Along with providing support to children who are victims of sexual violence or sexual harassment, we will provide the alleged perpetrator(s) with an education, safeguarding support as appropriate and implement any disciplinary sanctions. We recognise that a child abusing another child may be a sign they have been abused themselves or a sign of wider issues that require addressing within the culture of our setting. Taking disciplinary action and providing appropriate support, can, and should, occur at the same time if necessary.

We understand that reports of sexual violence and sexual harassment are extremely complex to manage. We know it is essential that victims are protected, offered appropriate support and every effort is made to ensure their education is not disrupted. We also know it is also important that other children, adult students and our staff are supported and protected as appropriate.

We will try to be aware of, and respond appropriately to **all reports and concerns**, including those outside of our setting, and or online.

Whilst the focus of this policy is on protecting and supporting children, we will of course protect any adults students and engage with adult social care, support services and the police as required.

Tackling Violence Against Women and Girls (VAWG)

We are committed to the principles of the Government's Tackling Violence Against Women and Girls Strategy (2021), which prioritises prevention, supports victims, pursues perpetrators, and strengthens safeguarding systems.

We recognise that girls are disproportionately affected by sexual violence, harassment, and abuse, and that these harms can intersect with other vulnerabilities such as race, disability, and social disadvantage.

Our approach is trauma-informed, victim-centred, and rooted in early intervention. We will challenge all forms of gender-based violence, educate pupils on consent and respect, and work with partners to disrupt harmful behaviour and protect those at risk.

Sexual violence

Our staff are aware of sexual violence and the fact children can, and sometimes do, abuse their peers in this way both inside and outside of our setting. We refer to sexual violence as sexual offences under the Sexual Offences Act 2003 as described below:

Rape: A person (A) commits an offence of rape if: he intentionally penetrates the vagina, anus or mouth of another person (B) with his penis, B does not consent to the penetration and A does not reasonably believe that B consents.

Assault by Penetration: A person (A) commits an offence if: s/he intentionally penetrates the vagina or anus of another person (B) with a part of her/his body or anything else, the penetration is sexual, B does not consent to the penetration and A does not reasonably believe that B consents.

Sexual Assault: A person (A) commits an offence of sexual assault if: s/he intentionally touches another person (B), the touching is sexual, B does not consent to the touching and A does not reasonably believe that B consents.

Causing someone to engage in sexual activity without consent: A person (A) commits an offence if: s/he intentionally causes another person (B) to engage in an activity, the activity is sexual, B does not consent to engaging in the activity, and A does not reasonably believe that B consents. (This could include forcing someone to strip, touch themselves sexually, or to engage in sexual activity with a third party.)

We believe that **consent** is about having the freedom and capacity to choose. Consent to sexual activity may be given to one sort of sexual activity but not another, e.g. to vaginal but not anal sex or penetration with conditions, such as wearing a condom. Consent can be withdrawn at any time during sexual activity and each time activity occurs. Someone consents to vaginal, anal or oral penetration only if s/he agrees by choice to that penetration and has the freedom and capacity to make that choice.

Sexual consent

- a child under the age of 13 can never consent to any sexual activity;
- the age of consent is 16;
- sexual intercourse without consent is rape.

Sexual harassment

When referring to sexual harassment we mean 'unwanted conduct of a sexual nature' that can occur online and offline, both inside and outside of our setting. When we reference sexual harassment, we do so in the context of child-on-child sexual harassment. Sexual harassment is likely to: violate a child's dignity, and/or make them feel intimidated, degraded or humiliated and/or create a hostile, offensive or sexualised environment.

Whilst not intended to be an exhaustive list, sexual harassment can include:

- sexual comments, such as: telling sexual stories, making lewd comments, making sexual remarks about clothes and appearance and calling someone sexualised names;
- sexual “jokes” or taunting;
- physical behaviour, such as: deliberately brushing against someone, interfering with someone’s clothes;
- displaying pictures, photos or drawings of a sexual nature,
- upskirting, and
- on-line sexual harassment.

We will follow the guidance set out in [UKCIS Sharing nudes and semi-nudes: advice for education settings working with children and young people](#).

Upskirting

The Voyeurism (Offences) Act, which is commonly known as the Upskirting Act, came into force on 12 April 2019. We recognise ‘Upskirting’ is where someone takes a picture under a person’s clothing (not necessarily a skirt) without their permission and or knowledge, with the intention of viewing their genitals or buttocks (with or without underwear) to obtain sexual gratification, or cause the victim humiliation, distress or alarm. It is a criminal offence. Anyone of any sex, can be a victim.

Harmful sexual behaviour

Children’s sexual behaviour exists on a wide continuum, from normal and developmentally expected to inappropriate, problematic, abusive and violent. Problematic, abusive and violent sexual behaviour is developmentally inappropriate and may cause developmental damage. We use the term “harmful sexual behaviour” (HSB). **HSB can occur online and/or face to face and can also occur simultaneously between the two.** We will consider HSB in a child protection context.

We will follow the specialist support and advice on HSB available from the specialist sexual violence sector. Our DSL will undertake training in HSB and incorporate this into our approach to managing sexual violence and sexual harassment. This training will include the Brook Traffic Light Tool.

Addressing inappropriate behaviour **can** be an important intervention that helps prevent problematic, abusive and/or violent behaviour in the future. Children displaying HSB have often experienced their own abuse and trauma. We understand it is important that they are offered appropriate support.

Hate crime

A hate crime, or hate incident, is an act motivated by, or perceived to be motivated by, prejudice against who the victim is, or what they appear to be, in relation to their race, religion, sexual orientation, gender identity, or disability. These are known as protected characteristics. It does not matter if the person targeted has the characteristic that the prejudice is directed toward. Only that they are perceived to have that characteristic or belong to that community.

A hate crime does not have to amount to a criminal offence to be considered a hate crime. Non-criminal hate crime incidents can still be reported to the police to be recorded. Evidence of a hate crime is not required – it is enough that one person, such as the victim or a witness, perceives the incident to be a hate crime.

The Police and CPS define hate crime as: "Any criminal offence which is perceived by the victim or any other person, to be motivated by hostility or prejudice, based on a person's disability or perceived disability; race or perceived race; or religion or perceived religion; or sexual orientation or perceived sexual orientation or transgender identity or perceived transgender identity."

Hate Crime covers a range of behaviours, including discrimination, exclusion, verbal abuse, physical assault, bullying including cyber-bullying and inciting hatred.

Hate Crime can manifest in the school/college environment. Our response may involve action and support from various agencies, including statutory agencies or educating the perpetrator about their language and impact. Following the incident, we will schedule check-ins with the victim to check on their well-being and ensure the issue has not continued.

All hate crime incidents reported in our setting must be recorded. The DSL will regularly review this data to identify emerging themes and inform preventative and responsive work around hate crime.

Racist incidents

A racist incident is "any incident which is perceived to be racist by the victim or any other person", according to the Stephen Lawrence Inquiry report.

We will comply with the Equality Act 2010, and not unlawfully discriminate against pupils or prospective pupils on the grounds of race (or other protected characteristics).

In line with the public sector equality duty (PSED) we will:

- Eliminate discrimination and other conduct that is prohibited by the Act.
- Advance equality of opportunity between people who share a protected characteristic and people who do not share it.
- Foster good relations across all characteristics – between people who share a protected characteristic and people who do not share it.
- Comply with both specific education law on exclusions, and general law on discrimination, when suspending or permanently excluding pupils.

All racist incidents reported in our setting must be recorded.

Telford and Wrekin Council requires all schools and colleges to report racist incidents on an Individual and Annual Return, Racist Incident Reporting and Recording System (IRIS). The reporting of incidents should take place within 7 days of the incident being reported or as soon as reasonably practicable. The DSL will regularly review this data to identify emerging themes and inform preventative and responsive work around racist incidents.

We will manage racist incidents in line with our anti-bullying policy and behaviour policy.

Our approach to preventing all forms of child-on-child abuse

We will undertake pre-planning, training for staff and implement an effective child-on-child abuse policy to help us develop the foundation for a calm, considered and appropriate response to any reports. We will review these regularly. The DSL (or a deputy) will engage with the local response to child-on-child abuse.

We understand the best responses to child-on-child abuse are based on a whole setting approach to safeguarding and child protection and we will involve our whole community in this.

Systems are in place, well promoted throughout our setting, and understandable and accessible for our pupils to confidently report abuse, sexual violence and sexual harassment, knowing their concerns will be treated seriously, and that they can safely express their views and give feedback.

As part of our commitment to our pupils, we have identified the following deputy DSL's, who are not part of our setting's senior leadership team, as staff in our setting, pupils can report child-on-child abuse to, if they choose not to report directly to a member of the senior leadership team.

Erin Mcinnes is the deputy DSL who is not part of the senior leadership team at Teagues Bridge.

All staff in our setting will undertake training in how to respond to child-on-child abuse, including reports of sexual violence or sexual harassment. Our DSL will undertake training to manage a report.

We accept the most effective preventative education programme will be through a whole setting approach that prepares pupils for life in modern Britain. Our setting has a clear set of values and standards, and these will be upheld and demonstrated throughout all aspects of school life. This is underpinned by our behaviour policy and pastoral support system, and by our planned programme of evidence-based content delivered through the whole curriculum. Our programme is developed to be age and stage of development appropriate. The DSL will support teachers in their delivery of this part of our curriculum. We recognise good practice allows children an open forum to talk through things. Such discussions can lead to increased safeguarding reports. Children will be made aware of the processes to raise their concerns or make a report and how any report will be handled. This will include processes when they have a concern about a friend or peer. All staff are aware of how to support children and how to manage a safeguarding report from a child.

The DSL will consider if external support or intervention is necessary as part of our approach to sexual violence and sexual harassment. We recognise specialist organisations can offer a different perspective and expert knowledge.

Our response to child-on-child abuse, including reports of sexual violence or sexual harassment and hate crime.

It is our aim to always recognise, acknowledge and understand the scale of harassment and abuse. We aim to never downplay some behaviours related to abuse that can lead to a culture of unacceptable behaviour, an unsafe environment and in worst case scenarios a culture that normalises abuse leading to children accepting it as normal and not coming forward to report it.

Where necessary we will work with other professionals, agencies and partners in our response. This may include the TWSP partners, the relevant local authority children's social care departments, the police and other services.

We recognise that children may not find it easy to tell staff about their abuse verbally. Children can show signs or act in ways that they hope adults will notice and react. In some cases, the victim may not make a direct report.

The immediate response to a report

If a member of staff thinks for whatever reason that a child may be at risk of or experiencing abuse by another child/ren, or that a child may be at risk of abusing or may be abusing another child/ren, they should discuss their concern with the DSL (or a deputy) without delay.

We will reassure **all** victims that they are being taken seriously, regardless of how long it has taken them to come forward and that they will be supported and kept safe. Abuse that occurs online or outside of our setting will not be downplayed and will be treated equally seriously. We will never give a victim the impression that they are creating a problem by reporting child-on-child abuse, including sexual violence or sexual harassment. Nor will we make a victim feel ashamed for making a report. We will explain that the law is in place to protect children and young people rather than criminalise them, and this will be explained in such a way that avoids alarming or distressing them.

Risk assessment and safety planning & support

We take the view that child-on-child abuse does happen even if it is not reported. Therefore, on the advice of the TWSP and Farrer & Co we have implemented a risk and needs assessment to help to minimise the risk of child-on-child abuse.

As per the advice of TWSP we refer to safety planning and support which is used for individual children in response to an alleged or actual incident child-on-child abuse, including sexual violence and where appropriate, incidents of sexual harassment.

When there has been a report of sexual violence, the DSL (or a deputy) will implement an immediate safety and support plan to identify risk and need. Where there has been a report of sexual harassment, the need for a safety and support plan will be considered on a case-by-case basis, but as good practice should be completed.

Our risk and needs assessment will consider:

- the victim, especially their protection and support;
- whether there may have been other victims;
- the alleged perpetrator(s);

- all the other children, (and, if appropriate, adult students and staff) at the school or college, especially any actions that are appropriate to protect them from the alleged perpetrator(s), or from future harms, and
- the time and location of the incident, and any action required to make the location safer.

If any of the children involved has SEND, the DSL will liaise with the SENDCO to assist in the management of the report. If the report involves an online safety element, the deputy DSL will liaise with the DSL as the online safety lead.

Safety and support plans must be recorded (written or electronic) and will be kept under review. At all times, we will be actively considering the risks posed to all of our pupils and students and put adequate measures in place to protect them and keep them safe. Safety and support planning will involve the relevant pupils, parents and professionals.

The DSL (or a deputy) will engage with children's social care and specialist services as required. Where there has been a report of sexual violence, it is likely that professional safety and support plans by social workers and or sexual violence specialists will be required. Our safety and support plan is not intended to replace the detailed assessments of expert professionals. Any such professional assessments will be used to inform our approach to supporting and protecting our pupils and updating our own risk assessment.

Action following a report of child-on-child abuse, including sexual violence and/or sexual harassment

Our DSL (and deputies) have a complete safeguarding picture and they are the most appropriate people to advise on our initial response. Important considerations will include:

- the wishes of the victim in terms of how they want to proceed. This is especially important in the context of sexual violence and sexual harassment. Victims should be given as much control as is reasonably possible over decisions regarding how any investigation will be progressed and any support that they will be offered. This will however need to be balanced with our duty and responsibilities to protect other children;
- the nature of the alleged incident(s), including whether a crime may have been committed and/or whether HSB has been displayed;
- the ages of the children involved;
- the developmental stages of the children involved;
- any power imbalance between the children. For example, is the alleged perpetrator(s) significantly older, more mature or more confident? Does the victim have a disability or learning difficulty?;
- if the alleged incident is a one-off or a sustained pattern of abuse (sexual abuse can be accompanied by other forms of abuse and a sustained pattern may not just be of a sexual nature);
- that sexual violence and sexual harassment can take place within intimate personal relationships between peers;

- are there ongoing risks to the victim, other children, adult students or school or college staff; and,
- other related issues and wider context, including any links to child sexual exploitation and child criminal exploitation.

As always when concerned about the welfare of a child, all staff will act in the best interests of the child. In all cases, we will follow general safeguarding principles. Immediate consideration will be given as to how best to support and protect the victim and the alleged perpetrator(s) (and any other children involved/impacted).

The starting point regarding any report will always be that there is a **zero-tolerance** approach to sexual violence and sexual harassment, and it is never acceptable and it will not be tolerated.

As a matter of effective safeguarding practice, we will do all we reasonably can to protect the anonymity of any children involved in any report of sexual violence or sexual harassment, especially where a case is progressing through the criminal justice system.

Options to manage the report

When to inform the alleged perpetrator(s) will be a decision that will be carefully considered. Where a report is going to be made to children's social care and/or the police, then, as a general rule, we will speak to the relevant agency and discuss next steps and how the alleged perpetrator(s) will be informed of the allegations. However, as per general safeguarding principles, this does not and will not stop us taking immediate action to safeguard our children, where required.

We will regularly review our decisions and actions, consider our relevant policies and any lessons learnt. We will look out for potential patterns of concerning, problematic or inappropriate behaviour. Where a pattern is identified, we will decide on a course of action. Consideration will be given to whether there are wider cultural issues within our setting that enabled the inappropriate behaviour to occur and where appropriate extra teaching time and/or staff training could be delivered to minimise the risk of it happening again.

The DSL (or deputy) will use their professional judgement to: (a) assess the nature and seriousness of the alleged behaviour, and (b) determine whether it is appropriate for the alleged behaviour to be dealt with internally and, if so, whether any external specialist support is required. The DSL and their deputies will consult the relevant local partnership threshold guidance to support their decision making and will engage in discussions with the statutory safeguarding partners to agree the levels for the different types of assessment and services to be commissioned and delivered, part of the local arrangements.

In 'complex' cases the DSL (or a deputy) may consult with Family Connect, and/or other relevant agencies on a no-names basis (where possible) to determine the most appropriate response.

Where the DSL (or a deputy) considers or suspects that the alleged behaviour in question might be abusive or violent on a spectrum or where the needs and circumstances of the individual

child/children in question might otherwise require it, the DSL (or a deputy) will contact Family Connect or the local social care team for the child and/or the police immediately and, in any event, within 24 hours of the DSL (or a deputy) becoming aware of the alleged behaviour. The DSL (or deputy) will discuss the concern(s) or allegation(s) with the agency and agree on a course of action, which may include:

1. manage internally;
2. early help;
3. referral to children's social care; and
4. reporting to the police.

In line with managing internally, the DSL or a deputy may decide that the children involved do not require referral to statutory services but may benefit from early help. Early help is support for children of all ages that improves a family's resilience and outcomes or reduces the chance of a problem getting worse. Providing early help is more effective in promoting the welfare of children than reacting later. Early help can be particularly useful to address non-violent HSB and may prevent escalation of sexual violence.

All concerns, discussions, decisions, and reasons for decisions will be recorded (written or electronic).

If bail conditions are in place, we will consider what additional measures may be necessary to manage any assessed risk of harm that may arise within our setting.

There may be delays in any case that is being progressed through the criminal justice system. We will not wait for the outcome (or even the start) of a police investigation before protecting the victim, alleged perpetrator(s) and other children and adult students in the school or college. The DSL (or a deputy) will work closely with the police (and other agencies as required), to ensure any actions we take do not jeopardise the police investigation.

If a child is convicted or receives a caution for a sexual offence, we will update our risk assessment. We understand it is important that we ensure both the victim and alleged perpetrator(s) remain protected. Where cases are classified as "no further action" (NFA'd) by the police or Crown Prosecution Service, or where there is a not guilty verdict, we will continue to offer support to the victim and the alleged perpetrator(s).

If a report is determined to be unsubstantiated, unfounded, false or malicious, the DSL will consider whether the child and/or the person who has made the allegation is in need of help or may have been abused by someone else and this is a cry for help. In such circumstances, a referral to Family Connect or the relevant children's social care team may be appropriate. If a report is shown to be deliberately invented or malicious, we will consider whether any disciplinary action is appropriate against the individual who made it as per our own behaviour policy.

Ongoing response to child-on-child abuse, including sexual violence or sexual harassment and hate crime

We will consider the principles based on effective safeguarding practice and to help shape any decisions regarding safeguarding and supporting the victim and the alleged perpetrator(s). We will consider what support is the most appropriate to support all children involved.

Victims may not talk about the whole picture immediately. It is essential that dialogue is kept open and encouraged. We will offer victims a designated trusted adult in our setting to talk about their needs.

A victim of sexual violence is likely to be traumatised and, in some cases, may struggle in a normal classroom environment. We will avoid any action that would have the effect of isolating the victim, in particular from supportive peer groups, there may be times when the victim finds it difficult to maintain a full-time timetable and may express a wish to withdraw from lessons and activities. This will be because the victim wants to, not because it makes it easier to manage the situation. If required, we will provide a physical space for victims to withdraw.

While we will give all the necessary support to victims to remain in our setting, if the trauma results in the victim being unable to do this, alternative provision or a move to another setting will be considered to enable them to continue to receive suitable education. This will only be at the request of the victim (and following discussion with their parents or carers).

Please refer to our policy and procedures with regard to child-on-child abuse.

We will always check in with all children involved or alleged to have been involved in child-on-child abuse that are in our school/college. This is to ensure our procedures have been followed and to understand their perception of the effectiveness of our procedures.

Child Sexual Exploitation (CSE) and Child Criminal Exploitation (CCE)

We recognise both CSE and CCE are forms of abuse. They both occur where an individual or group takes advantage of an imbalance in power to coerce, manipulate or deceive a child into sexual or criminal activity, it may involve being in exchange for something the victim needs or wants, and/or for the financial advantage or increased threat of violence. CSE and CCE can affect children, both male and female and can include children who have been moved for the purpose of exploitation. Information on CCE definition can be found on p.48 of Home Office's Serious Violence Strategy.

We know that different forms of harm often overlap, and that perpetrators may subject children and young people to multiple forms of abuse, such as criminal exploitation and sexual exploitation.

In some cases, the exploitation or abuse will be in exchange for something the victim needs or wants, and/or will be to the financial benefit or other advantage, such as increased status, of the perpetrator or facilitator.

Children can be exploited by adult males or females, as individuals or in groups. They may also be exploited by other children, who themselves may be experiencing exploitation – where this is the case, it is important that the child perpetrator is also recognised as a victim.

Whilst the age of the child may be a contributing factor for an imbalance of power, there are a range of other factors that could make a child more vulnerable to exploitation, including, sexual identity, cognitive ability, learning difficulties, communication ability, physical strength, status, and access to economic or other resources.

Some of the following can be indicators of both child criminal and sexual exploitation where children:

- appear with unexplained gifts, money or new possessions;
- associate with other children involved in exploitation;
- suffer from changes in emotional well-being;
- misuse drugs and alcohol;
- go missing for periods of time or regularly come home late; and
- regularly miss school or education or do not take part in education.

We will provide additional support to children who have been exploited to help maintain them in education.

Staff understand that the experience of girls who are criminally exploited can be very different to that of boys. The indicators may not be the same, they are aware that girls are at risk of criminal exploitation too. It is also important to note that both boys and girls being criminally exploited may be at higher risk of sexual exploitation.

If we feel that children may be being abused through exploitation, we will follow the Telford & Wrekin Council exploitation care and support pathway. We will always consider the Telford & Wrekin Council, 'explore more' document to support us in working with children and young people to understand what sort of matters may indicate that a child or young person is being sexually exploited. We will consult in the normal way with the relevant local authority children's services team to seek advice through consultation. In Telford & Wrekin we will consider whether the incident follows a CE care and support Pathway. The concerns will be followed through sensitively and appropriately with fellow professionals and the CE referral form will be completed. In relation to the CATE Risk Panels, where concerns are expressed around a child attending our setting, we will ensure attendance whenever possible as part of the established multi-agency process. Alongside this, we have taken the same steps and made all staff aware of the TWSP, A guide for professionals CATE leaflet. Due to the high number of reports in our borough, we will be particularly alert to CSE and CCE.

We will make parents and carers, children and young people aware of the relevant TWSP CATE leaflets. We will provide them with information on CEOP, the Child Exploitation and Online Protection command. Children and adults can use CEOP to report if they are concerned that a child is being sexually abused or groomed online.

We will take a proactive approach to minimising the risk of all types of exploitation. We will engage with lived experience work to benefit the whole-school/college community, including staff, children and parents. All staff will receive training and updates on child exploitation.

As a primary school provider our curriculum includes a programme of appropriate exploitation awareness, especially CSE raising awareness.

The Headteacher and DSL or deputy DSL will exchange any relevant information with local partners in relation to exploitation as required to enable all professionals to react, monitor and protect children. As a primary school the DSL or deputy DSL attend a termly exploitation briefing with the police and Telford and Wrekin Council.

The DSL will work with one of their deputies/CSE lead to focus on child exploitation, especially CSE and provide any required information to partners. The CSE lead will be known to parents and children. We will ensure the CSE lead is accessible to children.

We record all concerns about a child's welfare, including those relating to exploitation, especially CSE. We detail what the concerns are, what action was taken and what follow up is needed. The DSL will review all recorded safeguarding concerns, especially those pertaining CCE and CSE, as a minimum every six months to ensure all concerns are routinely recorded and shared with partner agencies.

We will carry out an annual review to consider the adequacy of our site security provision, including monitoring and recording any unauthorised access to our site, to ensure that our pupils are protected from potential perpetrators of child exploitation, especially CSE while at school/college. Any concerns will be shared as required with the police and/or Family Connect. Our site security audit findings will be used to update and review our site security risk assessment. We are committed to involving parents in the annual review of our site security arrangements.

We act in the spirit of the recommendations pertaining to schools and colleges from the published report of the [Independent Inquiry Telford Child Sexual Exploitation](#), published July 2022.

We will use the Telford & Wrekin Partnership Threshold Guidance, [Child Exploitation Risk Threshold Indicator](#) and 'explore more' document to identify the care and support needs of children involved in exploitation. Where care and support needs are identified as 'vulnerable,' 'complex' or 'acute' we will refer to Family connect. We will complete the West Mercia Police Protected Partner Intel form to share any relevant exploitation intelligence, this will be emailed to protect@westmercia.pnn.police.uk. In emergencies we will report information to the police via 999 for non-emergencies we will report information to the police via 101 or contactus@westmercia.police.uk

Child Criminal Exploitation (CCE)

Some specific forms of CCE can include children being forced or manipulated into transporting drugs or money through county lines, working in cannabis factories, shoplifting or pickpocketing.

They can also be forced or manipulated into committing vehicle crime or threatening/committing serious violence to others.

We recognise that this type of exploitation can trap children as perpetrators can threaten victims (and their families) with violence or entrap and coerce them into debt. They may be coerced into carrying weapons such as knives or begin to carry a knife for a sense of protection from harm from others. As children involved in criminal exploitation often commit crimes themselves, their vulnerability as victims is not always recognised by adults and professionals, (particularly older children), and they are not treated as victims despite the harm they have experienced. They may still have been criminally exploited even if the activity appears to be something they have agreed or consented to.

Child Sexual Exploitation (CSE)

We use the Telford & Wrekin Safeguarding Partnership definition of CSE. CSE is a type of modern slavery when a male or female under 18 is sexually exploited for the benefit or gain of someone else. The benefit or gain can come in many forms such as increased social status or financial gain. Some victims are also trafficked for the purpose of exploitation. Multiple tactics are used to exploit the child such as 'grooming' which is when the victim is given something, such as food, accommodation, drugs, alcohol, cigarettes, affection, gifts or money in return for performing sexual activities or having sexual activities performed on them. Other methods may include violence, bullying and intimidation, with threats of physical harm or humiliation. Abusers are increasingly using the internet to target vulnerable children. It can happen across any device that's connected to the web, like computers, consoles, tablets, mobile phones and smart speakers. Children can be at risk of online abuse from people they know or from strangers. It might be part of other abuse which is taking place offline, like bullying or grooming.

We also acknowledge the definition of CSE set out by the Department for Education. CSE is a form of child sexual abuse. Sexual abuse may involve physical contact, including assault by penetration (for example, rape or oral sex) or non-penetrative acts such as masturbation, kissing, rubbing, and touching outside clothing. It may include non-contact activities, such as involving children in the production of sexual images, forcing children to look at sexual images or watch sexual activities, encouraging children to behave in sexually inappropriate ways or grooming a child in preparation for abuse including via the internet.

CSE can be a one-off occurrence or a series of incidents over time and range from opportunistic to complex organised abuse. It can involve force and/or enticement-based methods of compliance and may, or may not, be accompanied by violence or threats of violence. It may happen without the child's immediate knowledge e.g., through others sharing videos or images of them on social media.

CSE can affect any child, who has been coerced into engaging in sexual activities. This includes 16- and 17-year-olds who can legally consent to have sex. Some children may not realise they are being exploited e.g., they believe they are in a genuine romantic relationship.

Some additional specific indicators that may be present in CSE are children who:

- have older boyfriends or girlfriends; and

- suffer from sexually transmitted infections, display sexual behaviours beyond expected sexual development or become pregnant.

We will make the following further information on signs of a child's involvement in sexual exploitation available to staff. [Child sexual exploitation: guide for practitioners](#)

We recognise that group-based CSE is a distinct and serious form of abuse, often involving multiple perpetrators and complex grooming tactics. In line with the National Audit on Group-Based Child Sexual Exploitation and Abuse (2025), we are committed to identifying and responding to this form of exploitation with urgency and professionalism.

Our staff are trained to take disclosures seriously, act without delay, and challenge any culture of silence or inaction. We will not allow fear of being perceived as culturally insensitive to prevent us from protecting children. Safeguarding is paramount, and we will act on concerns regardless of the background of those involved.

Our response to CSE is trauma-informed, victim-centred, and includes long-term support for survivors. We work closely with local partners, including the police, social care, and specialist services, to disrupt exploitation and safeguard children.

County lines

County lines is a term used to describe gangs and organised criminal networks involved in exporting illegal drugs using dedicated mobile phone lines or other form of "deal line." This activity can happen locally as well as across the UK - no specified distance of travel is required. Children and vulnerable adults are exploited to move, store/ sell drugs and money. Offenders will often use coercion, intimidation, violence (including sexual violence) and weapons to ensure compliance of victims.

Children can be targeted and recruited into county lines in a number of locations including our setting, other education settings, children's homes and care homes.

Children are also increasingly being targeted and recruited online using social media. Children can easily become trapped by this type of exploitation as county lines gangs can manufacture drug debts which need to be worked off or threaten serious violence and kidnap towards victims (and their families) if they attempt to leave the county lines network.

A number of the indicators for CSE and CCE as detailed above may be applicable to where children are involved in county lines. Some additional specific indicators that may be present where a child is criminally exploited through involvement in county lines are children who:

- go missing/be absent from school or home and are subsequently found in areas away from their home;
- have been the victim or perpetrator or alleged perpetrator of serious violence (e.g. knife crime);

- are involved in receiving requests for drugs via a phone line, moving drugs, handing over and collecting money for drugs;
- are exposed to techniques such as 'plugging', where drugs are concealed internally to avoid detection;
- are found in accommodation that they have no connection with, often called a 'trap house or cuckooing' or hotel room where there is drug activity;
- owe a 'debt bond' to their exploiters; and
- have their bank accounts used to facilitate drug dealing.

We will make the [Home Office](#) guidance on the signs of a child's involvement in county lines available to staff.

If a child is suspected to be at risk of or involved in county lines, a safeguarding referral will also be considered alongside consideration of availability of local services/third sector providers who offer support to victims of county lines exploitation, such as [CLIMB](#).

Modern Slavery and the National Referral Mechanism (NRM)

Staff understand that Modern slavery encompasses human trafficking and slavery, servitude and forced or compulsory labour. Exploitation can take many forms, including: sexual exploitation, forced labour, slavery, servitude, forced criminality and the removal of organs.

We know that information on the signs that someone may be a victim of modern slavery, the support available to victims and how to refer them to the NRM is available in the [Modern Slavery Statutory Guidance](#).

Mental Health

All staff are aware that mental health problems can, in some cases, be an indicator that a child has suffered or is at risk of suffering abuse, neglect or exploitation.

We recognise only appropriately trained professionals should attempt to make a diagnosis of a mental health concern. Staff, however, are well placed to observe children day-to-day and identify those whose behaviour suggests that they may be experiencing a mental health concern or be at risk of developing one.

Where children have a mental health need, we will implement a safety plan. We will use guidance from the following sources to implement a safety plan for pupils with mental health needs. Safety plans will be dynamic and regularly reviewed.

[Self-harm | Advice for young people | Get help | YoungMinds](#)

[Self-care | Anna Freud](#)

[Safety Planning - Every Life Matters \(every-life-matters.org.uk\)](#)

Where children have suffered abuse and neglect, or other potentially traumatic adverse childhood experiences, this can have a lasting impact throughout childhood, adolescence and into adulthood. Staff will be made aware of how these children's experiences; can affect their mental health, behaviour, and education.

If staff have a mental health concern about a child that is also a safeguarding concern, immediate action should be taken, by speaking to the DSL or a deputy and recording their concern. We will obtain medical help for children who are experiencing mental health issues where required.

Like with medical conditions, we will always obtain confirmation of mental health diagnoses from a suitable professional when diagnosis is self-reported or reported by parents or carers.

We will follow the DfE guidance on [Mental Health and Behaviour in Schools](#). In line with KCSIE 2025, we recognise that mental health concerns may be an indicator of abuse, neglect, or exploitation. Our safeguarding response includes dynamic safety planning, referral to appropriate services, and regular review of support plans for pupils with mental health needs.

Please refer to our Mental Health & Well-being policy.

Serious violence

All staff are aware of the indicators, which may signal that children are at risk from, or are involved with serious violent crime. These may include increased absence from school, a change in friendships or relationships with older individuals or groups, a significant decline in performance, signs of self-harm or a significant change in well-being, or signs of assault or unexplained injuries. Unexplained gifts or new possessions could also indicate that children have been approached by, or are involved with, individuals associated with criminal networks or gangs and may be at risk of criminal exploitation. We recognise that the likelihood of involvement in serious violence may be increased by factors, such as being male, having been frequently absent or permanently excluded from school and having experienced child maltreatment and having been involved in offending. Staff are aware of the associated risks and understand the measures in place to manage these.

We will consider the risk in the hours just before or just after school, when pupils are travelling to and from school/college is when violence can often peak, and these times can be particularly risky for young people involved in serious violence.

We will follow the advice provided in the Home Office's [Criminal exploitation of children and vulnerable adults: county lines](#) guidance.

We recognise to help prevent violence in our setting this can require a mix of universal, targeted or specialist interventions. Our setting leaders will aim to:

- develop skills and knowledge to resolve conflict as part of the curriculum;
- challenge aggressive behaviour in ways that prevent the recurrence of such behaviour;

- understand risks for specific groups, including those that are gender-based, and target interventions;
- safeguard, and specifically organise child protection, when needed;
- carefully manage individual transitions between educational establishments, especially into Pupil Referral Units (PRUs) or alternative provision; and
- work with local partners to prevent anti-social behaviour or crime.

In order to tackle violence affecting our setting and the community, we know it is important to:

- understand the problems that young people are facing both in our setting and in their local community;
- consider possible avenues of support; and
- work with local partners (who may have valuable information, resources or expertise).

Working with the local community safety partnership, Serious Violence Duty Sub-group, the youth offending team and the neighbourhood police team will help us to achieve a full understanding of the context we are working in. We will co-operate with the specified authorities, such as police, local government, youth offending teams, health and probation services as part of the Police, Crime, Sentencing and Courts Act 2022.

As part of our emergency management planning, we have in place systems for targeting and responding to individual or group violence. Even if violent incidents themselves do not appear to be an immediate concern, there may be a need to build resilience to such problems for the future.

Evidence shows that early-stage intervention is an effective strategy for preventing children becoming involved in violence, crime or antisocial behaviour later in life. We will assess what will work best in preventing violence in our setting to decide who to involve in providing intervention.

Child abduction and community safety incidents

We recognise child abduction as the unauthorised removal or retention of a minor from a parent or anyone with legal responsibility for the child. Child abduction can be committed by parents or other family members; by people known but not related to the victim (such as neighbours, friends and acquaintances); and by strangers.

We know that other community safety incidents in the vicinity of our setting can raise concerns amongst children and parents, for example, people loitering nearby or unknown adults engaging children in conversation.

As children get older and are granted more independence (for example, as they start walking to school on their own) we will give them practical advice on how to keep themselves safe. This may include outdoor-safety lessons run by teachers or other professionals. We will aim to build on building children's confidence and abilities rather than simply warning them about all strangers.

Children and the court system

We recognise that sometimes children are required to give evidence in criminal courts, for crimes committed against them or for other crimes they have witnessed. We will signpost them to the [guides for young people](#).

We will follow the age appropriate guides to support children [5-11 year-olds](#) and [12-17 year-olds](#).

We will follow these guides to ensure the correct process is followed and support and special measures are made available.

We understand that when child arrangements via the family courts are made following separation, this can be a stressful time, and entrench conflict in families and this can be stressful for children. We will follow the [guidance of the Ministry of Justice](#) in managing these situations.

Children with family members in prison

We recognise that children who have a parent in prison are at risk of poor outcomes including poverty, stigma, isolation and poor mental health. We will use the information from [NICCO](#), to help mitigate negative consequences for those children.

Cybercrime

We understand cybercrime is criminal activity committed using computers and/or the internet. It is broadly categorised as either 'cyber-enabled' (crimes that can happen off-line but are enabled at scale and at speed on-line) or 'cyber dependent' (crimes that can be committed only by using a computer). Cyber-dependent crimes include;

- unauthorised access to computers (illegal 'hacking'), for example accessing a school's computer network to look for test paper answers or change grades awarded;
- denial of Service (Dos or DDoS) attacks or 'booting'. These are attempts to make a computer, network or website unavailable by overwhelming it with internet traffic from multiple sources; and,
- making, supplying or obtaining malware (malicious software) such as viruses, spyware, ransomware, botnets and Remote Access Trojans with the intent to commit further offence, including those above.

Children with particular skill and interest in computing and technology may inadvertently or deliberately stray into cyber-dependent crime.

If there are concerns about a child in this area, the DSL (or a deputy), will consider referring into the **Cyber Choices** programme.

Parent conflict

We are committed to helping families to communicate better. We know that relationships are key and positive communication is what we want to see.

Good quality relationships are a right and not a privilege. For many families, stress is a large part of everyday life and stress is often the reason relationships feel strained and communication is poor. Whilst it can be hard to eliminate stress from everyday life, we understand that we can work towards improving the way we react, by communicating in more constructive ways.

When supporting families, we have a unique opportunity to enable communication in a more positive manner as opposed to in a way that ultimately damages their relationship.

We will work with families using solution focused ways to guide people towards working out what better, looks like for them. We understand this is a more effective strategy than offering our own advice and solutions. When supporting families with struggling relationships we will consider the following:

- don't assume you know what is going on, explore both parties' thoughts and feelings;
- be curious, what is really going on?;
- encourage a culture of appreciation between the people you are supporting. Kindness wins over blame every time;
- Remember that not everyone feels able to change, all we can do is offer support, but someone needs to want things to be different in order to make change happen, and
- It's normal to feel uncomfortable sometimes talking to someone about their relationship, we will not try to fix things or give advice but instead ask thoughtful, open questions.

Domestic abuse

Domestic abuse can encompass a wide range of behaviours and may be a single incident or a pattern of incidents. That abuse can be, but is not limited to, psychological, physical, sexual, financial or emotional. Children can be victims of domestic abuse. They may see, hear, or experience the effects of abuse at home and/or suffer domestic abuse in their own intimate relationships (teenage relationship abuse). All of which can have a detrimental and long-term impact on their health, well-being, development, and ability to learn.

Types of domestic abuse include intimate partner violence, abuse by family members, teenage relationship abuse and child/adolescent to parent violence and abuse. Anyone can be a victim of domestic abuse, regardless of sexual identity, age, ethnicity, socio-economic status, sexuality or background and domestic abuse can take place inside or outside of the home.

All children can witness and be adversely affected by domestic abuse in the context of their home life where domestic abuse occurs between family members. Experiencing domestic abuse and/or violence can have a serious, long lasting emotional and psychological impact on children. In some cases, children may blame themselves for the abuse or may have had to leave the family home as a result.

Young people can also experience domestic abuse within their own intimate relationships. This form of child-on-child abuse is sometimes referred to as 'teenage relationship abuse'. Depending on the age of the young people, this may not be recognised in law under the statutory definition of 'domestic abuse' (if one or both parties are under 16). However, as with any child under 18, where there are concerns about safety or welfare, child-safeguarding procedures should be followed and both young victims and young perpetrators should be offered support.

We will always liaise with agencies in a two-way process where domestic abuse is a factor in a household. Children within our care will be supported where needed. We are part of the Operation Encompass process where domestic incidents are shared directly with us, so that we have an initial awareness. To this end, we will be part of any agency referral, in a two-way process, such as the Domestic Violence Multi-agency Risk Assessment Conference (MARAC) and Multi Agency Public Protection Arrangements (MAPPA) or any other named agencies where these specific issues are a factor that may impair and impact on children's development.

Refuge runs the National Domestic Abuse Helpline, which can be called free of charge and in confidence, 24 hours a day on 0808 2000 247. Its website provides guidance and support for potential victims, as well as those who are worried about friends and loved ones. It also has a form through which a safe time from the team for a call can be booked.

We will use the following additional advice on identifying children who are affected by domestic abuse and how they can be helped:

- [NSPCC- UK domestic-abuse Signs Symptoms Effects](#)
- [Refuge what is domestic violence/effects of domestic violence on children](#)
- [Safe Lives: young people and domestic abuse](#)
- [Domestic abuse: specialist sources of support](#)
- [Home : Operation Encompass](#)

Homelessness

We understand that being homeless or being at risk of becoming homeless presents a real risk to a child's welfare. The DSL (and deputies) are aware of contact details and referral routes in to the [Local Housing Authority](#) so they can raise/progress concerns at the earliest opportunity. Indicators that a family may be at risk of homelessness include household debt, rent arrears, domestic abuse and anti-social behaviour, as well as the family being asked to leave a property. As appropriate, we will make referrals and/or hold discussions with the Local Housing Authority. However, this does not, and will not, replace a referral into children's social care where a child has been harmed or is at risk of harm.

We will consider homelessness in the context of children who live with their families, and intervention will be on that basis.

We recognise in some cases 16- and 17-year-olds could be living independently from their parents or guardians, for example through their exclusion from the family home, and will require a

different level of intervention and support. Children's services will be the lead agency for these young people and the designated safeguarding lead (or a deputy) will ensure appropriate referrals are made based on the child's circumstances. In these cases will follow the department and the Ministry of Housing, Communities and Local Government joint statutory guidance on the [provision of accommodation for 16 and 17 year olds who may be homeless and/ or require accommodation](#).

So-called 'honour-based' abuse (including Female Genital Mutilation and Forced Marriage)

We recognise that so-called 'honour-based' abuse (HBA) encompasses incidents or crimes which have been committed to protect or defend the honour of the family and/or the community, including female genital mutilation (FGM), forced marriage, and practices, such as breast ironing. Abuse committed in the context of preserving "honour" often involves a wider network of family or community pressure and can include multiple perpetrators. We are aware of this dynamic and will consider additional risk factors when deciding what form of safeguarding action to take. We see all forms of HBA as abuse (regardless of the motivation) and will handle and escalate as such. We will ensure our community are alert to the possibility of a child being at risk of HBA, or already having suffered HBA.

Actions

If staff have a concern regarding a child that might be at risk of HBA or who has suffered from HBA, they should speak to the DSL (or deputy). As appropriate, they will activate the local safeguarding procedures by contacting Family Connect/local social care team for the child and if necessary the police.

FGM

We understand that FGM comprises of all procedures involving partial or total removal of the external female genitalia or other injury to the female genital organs. It is illegal in the UK and a form of child abuse with long-lasting harmful consequences.

We will follow the National FGM Centre [Female Genital Mutilation: Guidance for schools](#).

FGM mandatory reporting duty for teachers

Section 5B of the Female Genital Mutilation Act 2003 (as inserted by section 74 of the Serious Crime Act 2015) places a statutory duty upon **teachers** along with regulated health and social care professionals in England and Wales, to report to the police where they discover (either through disclosure by the victim or visual evidence) that FGM appears to have been carried out on a girl under 18. Those failing to report such cases will face disciplinary sanctions. It will be rare for teachers to see visual evidence, and they should **not** be examining pupils or students, but the same definition of what is meant by "to discover that an act of FGM appears to have been carried out" is used for all professionals to whom this mandatory reporting duty applies. Information on when

and how to make a report can be found at [Mandatory reporting of female genital mutilation procedural information](#).

Teachers **must** personally report to the police cases where they discover that an act of FGM appears to have been carried out. Unless the teacher has good reason not to, they should still consider and discuss any such case with our DSL (or deputy) and involve children's social care as appropriate. The duty does not apply in relation to those at risk or suspected cases (i.e. where the teacher does not discover that an act of FGM appears to have been carried out, either through disclosure by the victim or visual evidence) or in cases where the woman is 18 or over. In these cases, teachers will follow our local safeguarding procedures and report to Family Connect or the local social care team for the child. The following is a useful summary of the FGM mandatory reporting duty: [FGM Fact Sheet](#).

In respect of FGM we will adopt the local [FGM Practice Guidelines and Resource Pack](#) as part of safeguarding responsibilities and inform/educate our staff in this particular area.

Forced marriage

We understand that forcing a person into a marriage is a crime in England and Wales. We know that a forced marriage is one entered into without the full and free consent of one or both parties and where violence, threats or any other form of coercion is used to cause a person to enter into a marriage. Threats can be physical or emotional and psychological. A lack of full and free consent can be where a person does not consent or where they cannot consent (if they have learning disabilities, for example). Nevertheless, some perpetrators use perceived cultural practices as a way to coerce a person into marriage. We play an important role in safeguarding children from forced marriage.

We will follow the Forced Marriage Unit published [statutory guidance](#) and [Multi-agency guidelines](#). Our staff can contact the Forced Marriage Unit if they need advice or information, contact: 020 7008 0151 or email fmua@fco.gov.uk

Preventing radicalisation

This preventing radicalisation section remains under review, following the publication of a new definition of extremism on the 14 March 2024.

We understand children may be susceptible to radicalisation into terrorism. Similar to our role in protecting children from other forms of harms and abuse, we will also protect children from this risk as part of our safeguarding approach.

- **Extremism** is the vocal or active opposition to our fundamental British values, including democracy, the rule of law, individual liberty and the mutual respect and tolerance of different faiths and beliefs. This also includes calling for the death of members of the armed forces.
- **Radicalisation** is the process of a person legitimising support for, or use of, terrorist violence.

- **Terrorism** is an action that endangers or causes serious violence to a person/people; causes serious damage to property; or seriously interferes or disrupts an electronic system. The use or threat **must** be designed to influence the government or to intimidate the public and is made for the purpose of advancing a political, religious or ideological cause.

We accept that there is no single way of identifying whether a child is likely to be susceptible to an extremist ideology. Background factors combined with specific influences, such as family and friends may contribute to a child's vulnerability. Similarly, radicalisation can occur through many different methods (such as social media or the internet) and settings (such as within the home).

We understand it is, where possible, our role to protect vulnerable people from extremist ideology and intervene to prevent those at risk of radicalisation being radicalised. As with other safeguarding risks, through appropriate training staff will be alert to changes in children's behaviour, which could indicate that they may be in need of help or protection. Staff will use their judgement in identifying children who might be at risk of radicalisation and act proportionately which must include reporting their concerns to the DSL (or deputy) who will consider making a Prevent referral.

The Prevent duty

We are subject to a duty under section 26 of the Counter-Terrorism and Security Act 2015 (the CTSA 2015), in the exercise of our functions, to have "due regard to the need to prevent people from becoming terrorists or supporting terrorism". This duty is known as the Prevent duty.

We see The Prevent duty as part of our wider safeguarding obligation. Our DSL and deputies and other senior leaders are familiar with the revised [Prevent duty guidance: for England and Wales](#), especially paragraphs 14-210.

As a college/sixth form we will follow the additional guidance: [Prevent duty guidance: for further education institutions in England and Wales](#) that applies to colleges.

We will follow the published advice for schools on the [Prevent duty](#).

We aim to ensure all staff have completed training on the Prevent duty.

This policy reflects the Prevent Duty Guidance for England and Wales (2023), which came into force on 31 December 2023. We recognise our statutory duty under Section 26 of the Counter-Terrorism and Security Act 2015 to have "due regard to the need to prevent people from being drawn into terrorism."

We adopt a whole-setting approach to Prevent, ensuring that all staff are trained to identify signs of radicalisation and extremism, understand the referral process, and know how to respond proportionately. Our DSL and senior leaders are familiar with the 2023 guidance, including the revised definitions of extremism and terrorism, and the expectations for risk assessment, partnership working, and information sharing.

We work in close partnership with the local authority, police, and Channel Panel, and follow the local Prevent referral pathway. Our curriculum promotes fundamental British values and resilience to extremist narratives. We also ensure that our filtering and monitoring systems are reviewed annually and are proportionate to the risks identified in our Prevent risk assessment.

Channel

Channel is voluntary, as a confidential support programme which focuses on providing support at an early stage to people who are identified as being vulnerable to being drawn into terrorism. We will refer to the relevant Channel programme if we are concerned that an individual might be vulnerable to radicalisation. We will always seek the individual's consent to do so. We will attend and engage with the Channel panel to assist in any assessment.

We will follow the [Channel guidance](#).

If we feel children are being abused through extremism or being radicalised, we will consult directly with the local police Counter Terrorism Unit (CTU). This is done with a [Prevent referral form](#), following the Prevent flowchart. The referral will be sent to the police. As with all referrals, this referral will be dealt with appropriately with professionals. If it is deemed from the Prevent team that the intervention is not criminal and does not warrant a Channel Panel, but needs local support, we will work with those professional leads for Telford & Wrekin Council. Presently that is **Jas Bedesha**, jas.bedesha@telford.gov.uk. The education lead for Telford & Wrekin Council is **Joanne Hanslip**, joanne.hanslip@telford.gov.uk. Where necessary, the DSL (or a deputy) will consult with the Telford and Wrekin professional lead, education lead or CTU officers: Alison Potts, a.potts@west-midlands.pnn.police.uk, or Holly Aungiers, holly.aungiers@westmercia.police.uk, to seek advice on making prevent referrals.

Telford & Wrekin Prevent Pathway

Referral form completed and emailed to:

- ctu_gateway@westmidlands.police.uk for de conflict to take place

Police:

Send to CTU prevent hub for registering onto the system and onward allocation to CTCO.

CTCO to complete police gateway assessment & send to Family Connect to assess for any other vulnerabilities

Family Connect (MASH):

Complete risk assessment

Risk Identified

Familyconnect@telford.gov.uk

All relevant agencies

MASH Strategy discussion taken place

Yes

Family Connect (MASH) email referrer requesting Consent and a Request for Services Form

On receipt:

Information Share

Yes

If there is sufficient information to indicate a level of 'risk', police contact local Prevent Lead to organise and chair a 'Channel' Panel meeting. (A Senior Officer from FC will form part of the Channel Panel)

No

No risk identified case closed

Prevent officers collate information to inform panel

Safeguarding

Triage

No further action

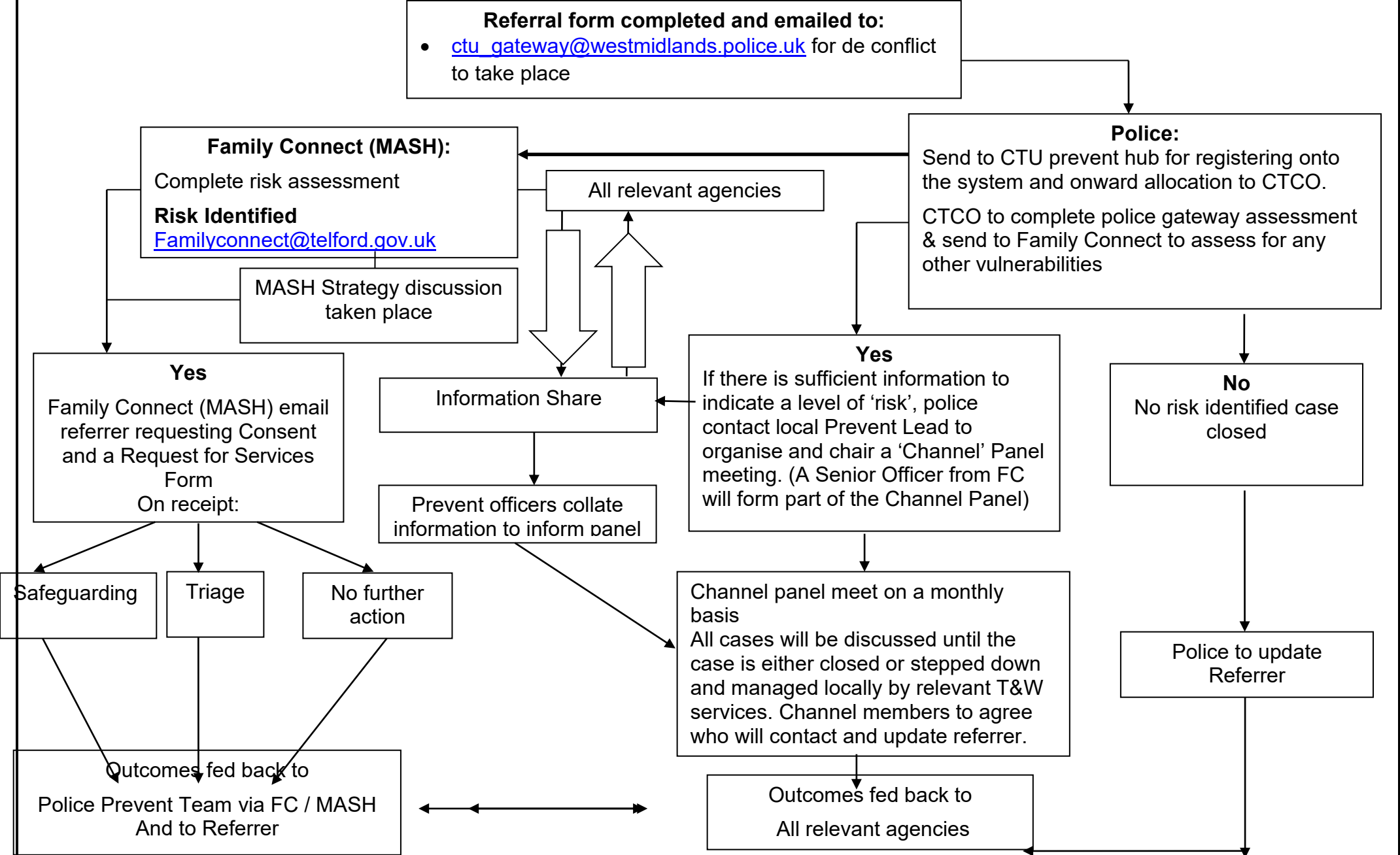
Channel panel meet on a monthly basis

All cases will be discussed until the case is either closed or stepped down and managed locally by relevant T&W services. Channel members to agree who will contact and update referrer.

Police to update Referrer

Outcomes fed back to Police Prevent Team via FC / MASH And to Referrer

Outcomes fed back to All relevant agencies

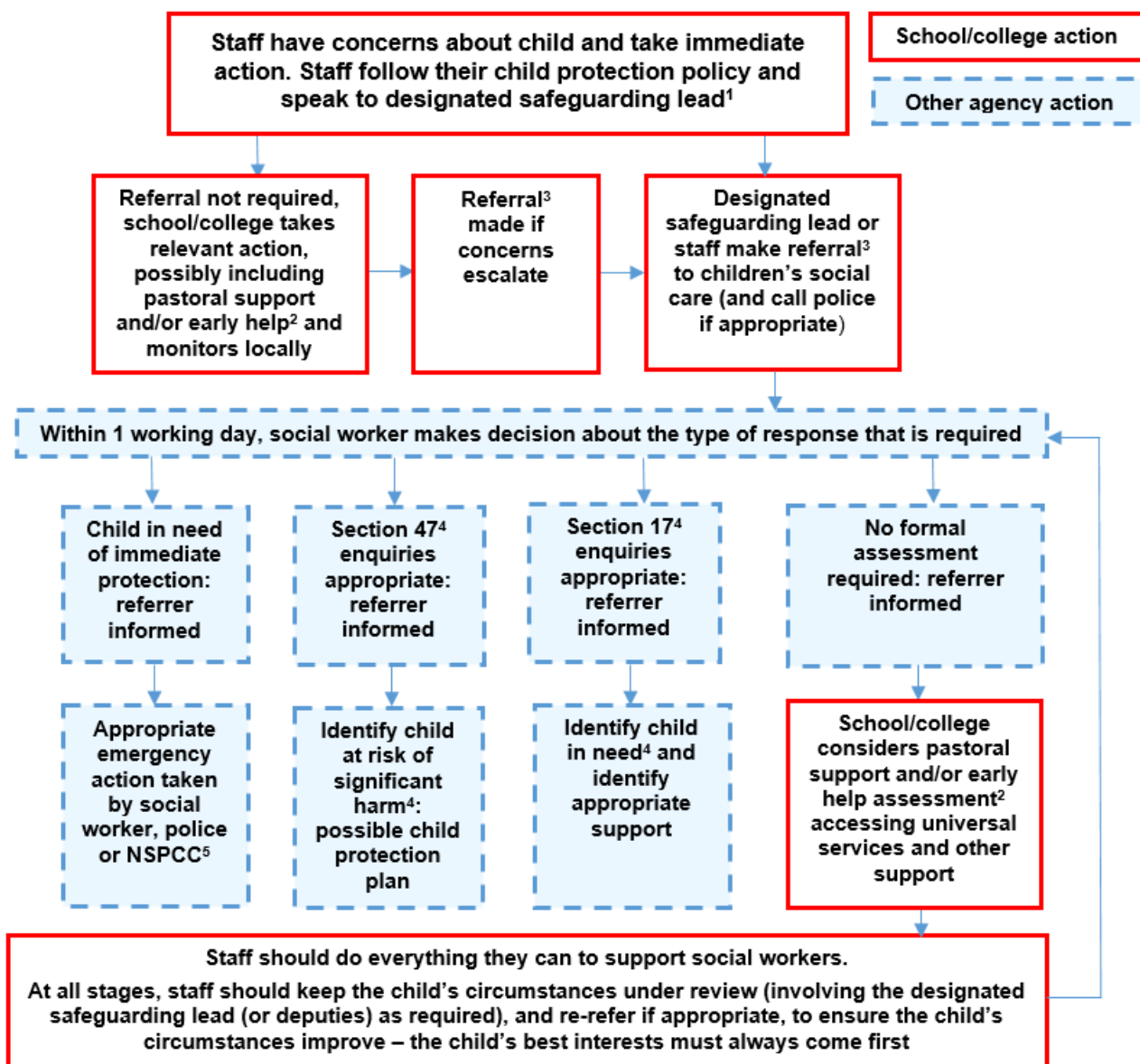


- Family Connect (MASH) will discuss with Police HAU to support the completion of a risk assessment at the earliest opportunity.
- If referral is adult led and children are identified as being present / resident within the family home, the referral form will be shared with Family Connect along with all supporting evidence.
- Safeguarding, Triage and No further action are key outcomes following the completion of 'Request for services' form.
- Agreed outcomes will be shared between Family connect and Police.

What to do if you have concerns about a child

Staff working in our setting maintain the attitude of 'it could happen here' where safeguarding is concerned and will always act in the **best interests** of the child.

If staff have **any concerns** about a child's welfare, they must act on them **immediately**. The following flow chart sets out the process for staff when they have concerns about a child.



Where someone has a concern about the welfare of a child, they should speak to the DSL (or a deputy). Options will then include;

- managing any support for the child internally via our own pastoral support processes;
- providing early help support and/or undertaking an early help assessment; or
- making a referral to statutory services, for example, as the child is in need or suffering or likely to suffer significant harm or impairment. This will involve contacting Family Connect or the local social care team for the child. When making a referral to children's social care staff will ensure they are aware of the child's history, such as any previous

concerns about the child or their family, so that they can share this information with children's social care staff

Where we discover a child under 12 has been left alone for long periods of time at home or in the community we will contact the police. We will never escort a child back to school where we find them alone at home or in the community. Where a child under 16 is alone and we feel it is placing them at risk we will contact the police. Where children are alone because they have left school without permission and parents cannot locate the child quickly, we will view the child as being at risk and will contact the Police. We will report all concerns about children being alone to the police, via IOI. If the child is immediate danger, then we will report to the police, via 999. We will then notify Family Connect or the emergency duty team as soon as reasonably practicable.

[NPCC- When to call the police](#) will be considered by the DSL to help them understand when they should consider calling the police and what to expect when they do.

All referrals to the local social team must be followed up in writing using the social care team's relevant referral/request forms. For referrals in Telford & Wrekin we will use the [Request for service form](#).

If in exceptional circumstances, the DSL or a deputy is not available, the person who has the concern should speak to a member of the senior leadership team and/or take advice from Family Connect or the local social care team for the child. In these circumstances, any action taken should be shared with the DSL (or deputy) as soon as is practically possible.

Staff should not assume a colleague, or another professional will take action and share information that might be critical in keeping children safe. They should be mindful that early information sharing is vital for effective identification, assessment and allocation of appropriate service provision. [Information Sharing: Advice for Practitioners Providing Safeguarding Services to Children, Young People, Parents and Carers](#) supports staff who have to make decisions about sharing information. If in any doubt about sharing information, staff should speak to the DSL or a deputy.

In the unlikely event of a person in our school/college who has a concern for a child is not satisfied with the action taken by the DSL or a deputy they should speak to them again to share their concerns. If they remain unsatisfied with the response, then the person who had the original concern should speak to another trained DSL to seek resolution. If following speaking to another trained DSL the person remains concerned that appropriate action has not been taken to safeguarding or protect the child, the person should report their original concern to Family Connect or the local social care team for the child and follow the school/college Whistleblowing procedures.

Referral agencies

Telford & Wrekin social care team Family Connect 01952 385385 Out of Hours 01952 676500	Shropshire social care team First Point of Contact 0345 678 9021 Out of Hours 0345 678 9040	Staffordshire social care team Childrens Advice and Support Service 0300 111 8007 Out of Hours 0345 604 2886	Wolverhampton social care team MASH 01902 555392 Out of Hours 01902 552999
If you think a child is in immediate danger, call the police on 999 For non-Police emergencies call 101			
Childline 0800 1111	NSPCC 0800 800 5000	Public Protection Unit (West Mercia Police): 0300 333 3000	

Immediate response to a child or parent

Staff will follow effective safeguarding practice which includes:

- if possible, managing reports with two members of staff present, (preferably one of them being the designated safeguarding lead or a deputy). However, this is not always possible;
- where the report includes an online element, we will be aware of searching, screening and confiscation advice (for schools) and UKCIS sexting advice (for schools and colleges). The key consideration is for staff not to view or forward illegal images of a child. The highlighted advice provides more details on what to do when viewing an image is unavoidable. In some cases, it may be more appropriate to confiscate any devices to preserve any evidence and hand them to the police for inspection;
- not promising confidentiality at this initial stage as it is very likely a concern will have to be shared further (for example, with the DSL or children's social care) to discuss next steps. Staff will only share the report with those people who are necessary in order to progress it. It is important that the victim understands what the next steps will be and who the report will be passed to;
- recognising a child is likely to disclose to someone they trust: this could be **anyone** in our setting. It is important that the person to whom the child discloses recognises that the child has placed them in a position of trust. They should be supportive and respectful of the child;
- keeping in mind that certain children may face additional barriers to telling someone because of their vulnerability, disability, sex, ethnicity and/or sexual orientation;
- listening carefully to the child, reflecting back, using the child's language, being non-judgmental, being clear about boundaries and how the report will be progressed, not asking leading questions and only prompting the child where necessary with open questions – where, when, what, etc or TED 'tell me', 'explain to me' and 'describe'. It is important to note that while leading questions should be avoided, staff can ask children if they have been harmed and what the nature of that harm was;
- considering the best way to make a record of the report. Best practice is to wait until the end of the report and immediately write up a thorough summary. This allows the staff

member to devote their full attention to the child and to listen to what they are saying. It may be appropriate to make notes during the report (especially if a second member of staff is present). However, if making notes, staff should be conscious of the need to remain engaged with the child and not appear distracted by the note taking. Either way, **it is essential a first-hand written record is made;**

- only recording the facts as the child presents them. The notes should not reflect the personal opinion of the note taker. We are aware that notes of such reports could become part of a statutory assessment by children's social care and/or part of a criminal investigation; and
- informing the DSL (or a deputy), as soon as practically possible, if the DSL (or a deputy) is not involved in the initial report.

If conversations need to take place and confidentiality is paramount to welfare, then these conversations will be held in appropriate settings and away from any general areas, where that confidentiality may be compromised.

We will never allow fears about sharing information to stand in the way of the need to promote the welfare and protect the safety of children. We expect **concerns that arise in a morning will be reported to the DSL (or a deputy) by lunchtime that day. Concerns that arise in an afternoon should be reported by or as close to the end of the school day, or as soon as reasonably practicable.** Any concerns arising outside of the normal school day should be reported as quickly as possible. If in doubt concerned, parties should talk with the DSL (or a deputy). **Delay is unacceptable and may result in disciplinary action.**

Where a child is suffering, or is likely to suffer from harm or impairment, we will make a referral to children's social care (and if appropriate the police) immediately. If we are unsure which local authority the child lives in we will use the online tool [Report Child Abuse to Your Local Council](#) to direct us to the relevant local children's social care contact number.

Children's social care assessments should consider where children are being harmed in contexts outside the home. Therefore, we will provide as much information as possible as part of the referral process. This will allow any assessment to consider all the available evidence and enable a contextual approach to address such harm.

Our role is to refer the information received and **under no circumstances** become the investigator. We will work appropriately with each child, their family and other agencies to protect in all cases the welfare of the child. We will work in partnership and fulfil the ethos and abide by the principles of the 2023 [Telford and Wrekin threshold guidance](#) or the threshold guidance for the local social care team for the child.

Staff working at this setting may be required to support other agencies and professionals in an early help assessment, in some cases acting as the lead professional. Any such cases will be kept under constant review and consideration given to a referral to children's social care assessment for statutory services if the child's situation does not appear to be improving or is getting worse.

Staff working at this setting will be made aware of the process for making referrals to children's social care and statutory assessments. This is under the Children Act 1989, especially **section 17 (children in need)** and **section 47 (a child suffering, or likely to suffer, significant harm)**, that may follow a referral; along with the role staff might be expected to play in such assessments.

A **child in need** is defined under the Children Act 1989 as a child who is unlikely to achieve or maintain a reasonable level of health or development, or whose health and development is likely to be significantly or further impaired, without the provision of services; or a child who is disabled. Local authorities are required to provide services for children in need for the purposes of safeguarding and promoting their welfare. Children in need may be assessed under section 17 of the Children Act 1989.

Local authorities, with the help of other organisations as appropriate, have a duty to make enquiries under section 47 of the Children Act 1989 if they have reasonable cause to suspect that a **child is suffering, or is likely to suffer, significant harm**. Such enquiries enable them to decide whether they should take any action to safeguard and promote the child's welfare and must be initiated where there are concerns about maltreatment, including all forms of abuse, neglect, exploitation, female genital mutilation or other so-called 'honour based' violence, and extra-familial threats like radicalisation and sexual exploitation.

Where there are visible injuries, all staff should record these on a body map diagram and describe them the best they can. We will assume good evidential practice to get two persons involved who have seen the injury and can account for it on the body map, then immediately follow up with a referral as described above.

Under **no** circumstances will staff photograph injuries seen on children. Our staff are not expert witnesses. If the concern is around non-accidental injury, then that is a matter that requires immediate attention on the day resulting in an appropriate referral to Family Connect or the local social care team for the child. Those professionals will control the process of photographic evidence gathering and assessment.

For staff to interpret any concerns we will assess each incident as it appears. In respect of assessing any bruising to a child we will refer to the [Bruising of Children guidance produced by the TWSP](#) to assist their decision making.

The role of the local authority

Within one working day of a referral being made, a local authority social worker should acknowledge receipt to us as the referrer and make a decision about the next steps and the type of response that is required. This will include determining whether:

- the child requires immediate protection and urgent action is required;
- any services are required by the child and family and what type of services;
- the child is in need, and should be assessed under section 17 of the Children Act 1989;
- there is reasonable cause to suspect the child is suffering or likely to suffer significant harm, and whether enquiries must be made and the child assessed under section 47 of the Children Act 1989; and

- further specialist assessments are required to help the local authority to decide what further action to take.

The referrer will, even if they are not the DSL (or a deputy), follow up if this information if it is not forthcoming.

If, after a referral, the child's situation does not appear to be improving, we will consider following TWSP [local escalation procedures](#) or those for the safeguarding partnership for the child to ensure our concerns have been addressed and, most importantly, that the child's situation improves.

The Telford & Wrekin Council Director of Children's Services is **Jo Britton**.

Record keeping

All concerns will be recorded first hand by the person raising the concern, using the relevant paper or electronic recording system used by visitors, staff and supply staff. Concerns will be passed onto the DSL or a Deputy DSL in a timely manner. DSLs will record in writing any discussions and decisions made, and the reasons for those decisions, Information will be kept confidential and stored securely. We will keep concerns and referrals in a separate child protection file for each child.

Records should include:

- a clear and comprehensive summary of the concern;
- details of how the concern was followed up and resolved; and
- a note of any action taken, decisions reached and the outcome.

We follow the guidance in Annex C of KCSIE 2025 regarding the secure transfer, retention, and review of child protection records. All safeguarding records are reviewed annually and transferred securely when a child moves to another setting

If in doubt about recording requirements, visitors, staff and supply staff will discuss with DSL (or a deputy).

Anyone who has a safeguarding concern should follow these recording principles:

- record the date, time, place and context of the concern, recording facts and who you shared them with;
- record where you spoke with the child or parent and personal safety details, such as 'I discussed the incident with the child in the Headteacher's office with the door open' or justify if it were closed, but naming those who you told this to be the case. If alone, reason that rationale stating 'the child stated they would only confide in me if I was alone';
- if it is observation of bruising or an injury try to record detail, e.g. 'right arm, above elbow', 'bruise approximately 5cm in diameter noticed on back of lower right leg';
- note the non-verbal behaviour and the key words in the language used by the child or parent (try not to translate into 'proper terms' ensuring that you use the child or parent's own words). Body language should be noted and support any record of disclosure; and

- it is important to retain on file signed original handwritten notes and pass them on to the DSL (or a deputy) who may ask you to complete a written referral to children's social care.

We adopt guidance from TWSP Workbook for Designated Safeguarding Leads and Governors/Committee Members/Trustees/Proprietors with responsibility for safeguarding, incorporating: Advice note on Child Protection record keeping.

Visitors, staff and supply staff note down concerns on a Cause for Concern form available from reception. The visitor or supply member of staff should inform the DSL (or a deputy) as soon as their concern arises. Once completed, they should hand the Cause for Concern form to the DSL (or deputy). All Cause for Concern forms will be uploaded directly to CPOMS/placed into the child's safeguarding record to help to maintain a first-hand record.

This school/college has adopted an electronically maintained recording system called Child Protection Online Management System (CPOMS). The CPOMS system is a totally secure system of record keeping which enables us to quickly encapsulate a child journey with us.

The DSL and deputies record all concerns on CPOMS. We will ensure that a restricted number of staff will have full access to this system as named key holders. If concerns have been logged by staff via this process it should not be presumed that this is an instant notification that has been seen immediately. If appropriate the issue should not assume anything and a verbal conversation should also take place if needed for clarification.

Concerns are stored chronologically in a safeguarding file/electronically for that child.

What to do if you have safeguarding concerns about another staff member

If staff have safeguarding concerns, or an allegation is made about another member of staff (including supply staff, volunteers and contractors) posing a risk of harm to children, then:

- this should be referred to the Headteacher;
- where there are concerns/allegations about the Headteacher, this should be referred to the chair of governors; and
- in the event of concerns/allegations about the Headteacher, this should be reported directly to the designated officer(s) at the local authority.

Any concerns about staff must be recorded on CPOMS staff safe/low-level concern recording form and referred to the relevant person above.

Any allegations that may meet the harms threshold will be addressed as set out in Part four, Section one of KCSIE. Any concerns that do not meet the harm threshold, referred to, as 'low level concerns' will be addressed as in Part four, Section two of KCSIE. When an allegation is made, the DSL will be responsible for ensuring that a child is not at risk and refer cases of suspected abuse to Family Connect or the child's local social care team.

We will **only** undertake basic enquiries to help determine whether there is any foundation to the allegation.

The LADO for Telford & Wrekin Council is Glenn Ashbrooke who will be informed of all allegations that come to our attention and appear to meet the criteria set out in Part Four, Section One of KCSIE, so they can consult police and children's social care services as appropriate. All LADO referrals must be made via Family Connect, unless the subject child is open to a social worker and then the LADO referral must be made via the child's allocated social worker.

The governing body, will be notified of any allegations or low-level concerns at each scheduled meeting. The governor responsible for safeguarding will be informed soon after the allegation or low-level concern has been received. Their role is not to know details of the persons or concern but to ensure policies and procedures are adhered to and to provide relevant support.

We will make a referral to the Disclosure and Barring Service (DBS) if a person in regulated activity has been dismissed or removed due to safeguarding concerns or would have been had they not resigned.

We believe that those who work within our community are in positions of trust and as such codes of conduct are based on the underlying principle that the highest standards are expected from all. In line with KCSIE a separate code of conduct policy will be adopted by this setting for staff, volunteers, contractors and governors.

[Guidance for safer working practice for those working with children and young people in educational settings](#) produced by the Safer Recruitment Consortium, provides excellent guidance on the expected standards of all those that work with children. We will make all those in our community aware of its existence and this will work alongside the separate code of conduct mentioned above and any established human resources processes currently in place.

To help avoid potential allegations and safeguarding concerns, and for the safety and welfare of pupils and the protection of staff, we will make classrooms highly visible places whereby easy viewing is possible. The masking of windows is forbidden and as such treated as a safeguarding issue for the protection of all. There may be exceptional circumstances where masking of classrooms is needed and justified, for example, for the teaching of drama; in these cases, the Headteacher will make a judgement on a case-by-case basis being appropriate, balanced and proportionate.

Please see our procedure for managing safeguarding concerns, or allegations against staff (including supply staff, volunteers and contractors).

What to do if you are concerned about another safeguarding practice in the school

All staff and volunteers should feel able to raise concerns about poor or unsafe practice and potential failures in our safeguarding regime and know that such concerns will be taken seriously by our senior leadership team.

Please refer to our Whistleblowing procedures.

Where staff feel that they cannot report a concern through the above channels general guidance can be found at [Advice on whistleblowing](#). The [NSPCC whistleblowing helpline](#) is available for staff who do not feel able to raise concerns regarding child protection failures internally. Staff can call 0800 028 0285 or email help@nspcc.org.uk

Part two: The management of safeguarding

The **designated governor** with responsibility for safeguarding is **Kevin Evans and Steven Reynolds**.

The **designated governor/proprietor** with responsibility for 'Prevent' is **Steven Reynolds**.

Their role is to take **leadership** responsibility for our safeguarding arrangements.

Our designated governor/proprietor with responsibility for safeguarding will work closely with the designated governor/proprietor with oversight of early years to ensure the safety and welfare of early years children in our setting.

The governing body has strategic leadership responsibility for our safeguarding arrangements and **must** ensure that we comply with their duties under legislation. They **must** have regard to KCSIE, ensuring our policies, procedures and training in our setting are effective and comply with the law at all times.

Our governance work with school leaders to set a clear vision and approach with a focus on pupil well-being, safeguarding and child protection. This includes actively promoting the fundamental British values of democracy, the rule of law, individual liberty and mutual respect and tolerance for those with different faiths and beliefs.

Our Headteacher will ensure that the policies and procedures, adopted by this governing body, are understood, and followed by all staff.

All governors/proprietors have received appropriate safeguarding and child protection training (including online safety) training at induction. This will ensure they have the knowledge to provide strategic challenge to test and assure themselves that the safeguarding policies in our setting are effective and support the delivery of a robust whole-setting approach to safeguarding. This training will be updated annually.

The governing body/proprietor will act under their obligations under the Data Protection Act 2018 and the UK GDPR, Human Rights Act 1998, the Equality Act 2010, (including the Public Sector Equality Duty), and their local multi-agency safeguarding arrangements.

Our approach to safeguarding

This governing body will ensure that we facilitate a whole setting approach to safeguarding. This means ensuring safeguarding and child protection are at the forefront and underpin all relevant aspects of process and our policy development. Ultimately, all systems, processes and policies will operate with the best interests of the child at the heart.

Where there is a safeguarding concern, our governing body and our senior leaders will ensure the child's wishes and feelings are taken into account when determining what action to take and what services to provide. Systems are in place, and they will be well promoted, easily understood and easily accessible for children to confidently report abuse, knowing their concerns will be treated seriously,

and knowing they can safely express their views and give feedback. We will work with children to remove any barriers to reporting.

We will facilitate staff to contribute to and shape our safeguarding arrangements and Child Protection policy.

We will ensure that suitable arrangements are in place to provide access for all staff to access safeguarding supervision. Please see our Safeguarding Supervision policy.

Policies and procedures

We aim to ensure there are appropriate policies and procedures in place in order for appropriate action to be taken in a timely manner to safeguard and promote children's welfare.

The designated safeguarding lead (DSL)

Our governing body/board/proprietor has appointed **Natalie Woods** to be the DSL of this school and **Mark Hale and Erin McInnes** to be their deputies. We will set out their responsibilities in their job description.

Sarah Abdulla and Natalie Woods will take ultimate responsibility for safeguarding and child protection, online safety, and understanding the filtering and monitoring systems and processes in place at our setting as the DSL and as an appropriate **senior member** of staff from our **leadership team**. The DSL is also responsible for ensuring that safeguarding arrangements for early years provision meet the requirements of the EYFS 2025 framework, including ensuring staff are trained in early years safeguarding, paediatric first aid, and that welfare requirements are met. In line with Annex C of KCSIE 2025, the DSL is responsible for understanding the setting's filtering and monitoring systems, supporting staff with safeguarding concerns, promoting a culture of listening to children, and ensuring early years safeguarding requirements are met as outlined in EYFS 2025.

During term time, the DSL and/or a deputy will always be available (during our normal operating hours) for the staff to discuss any safeguarding concerns with. During out of hours/out of term activities we will provide appropriate cover by ensuring the DSL and/or a deputy is available.

Prior to any education visit, a risk assessment will be completed to consider if the DSL (or a deputy) needs to be present. We will always consider how quickly a DSL can respond to a safeguarding issue if they are not present. Where safeguarding concerns are raised during an educational visit the DSL (or a deputy) must be notified immediately, even if they are not physically present at the site of the educational visit. They will liaise with the person responsible for the education visit to manage the concern and refer to the relevant agencies.

The DSL and any deputies will undergo two-day 'newly appointed designated safeguarding lead' training as recognised by TWSP to provide them with the knowledge and skills required to carry out the role. They will attend one-day 'designated safeguard lead refresher training' as recognised by

TWSP every two years. In addition to their formal training as set out above, their knowledge and skills will be updated, for example, via Telford & Wrekin Council's Education Safeguarding e-bulletins, attending termly designated safeguarding lead refreshers and taking time to read and digest safeguarding developments, at regular intervals, and at least annually, to keep up with any developments relevant to their role. We aim to ensure at least one DSL and any deputies attend each termly update. All designated safeguarding leads and any deputies will disseminate training to all relevant staff and governors.

The designated safeguarding lead will form part of a borough wide network, where information is shared, in a two-way process, with the Telford & Wrekin Council, Education Safeguarding Team. The DSL maintains an up-to-date knowledge of local learning published by the TWSP and disseminates this learning to staff, leaders and governance as appropriate.

They will complete the Safeguarding Audit - Education each year and submit to TWSP. The Safeguarding Audit – Education, will be supplied by the Telford & Wrekin Council Education Safeguarding Team.

The DSL and their deputies will fulfil their role and responsibilities as set out in Annex C KCSIE.

In line with Annex C of KCSIE 2025, the DSL is also responsible for understanding the setting's filtering and monitoring systems, supporting staff with safeguarding concerns, and promoting a culture of listening to children.

Multi-agency working

The DSL and any deputies will work with other agencies in line with Working Together to Safeguard Children. We are committed to embedding the national multi-agency child protection standards introduced in Working Together to Safeguard Children 2023. These standards guide our practice in identifying, assessing, and responding to safeguarding concerns, and ensure that our work with partners is timely, proportionate, and focused on improving outcomes for children.

Our governing body and the DSL are familiar with the TWSP arrangements. In Telford & Wrekin schools and colleges have been named as relevant agencies by the TWSP. We will engage with the TWSP as required and follow the Telford & Wrekin Threshold Guidance or the appropriate threshold guidance for where the child resides or for who is responsible for the child, to follow the local protocol for assessments.

The governing body of this setting expect staff to work with social care, the police, health services and other services to promote the welfare of children and protect them from harm. This includes us providing a coordinated offer of early help when additional needs are identified by us or another agency. We will never restrict access for children's social care to conduct a section 17 or section 47 assessment.

The DSL is expected to consider the requirement for children to have an Appropriate Adult. Further information can be found in the Statutory guidance - [PACE Code C 2019](#).

Information sharing

We recognise that information is vital in identifying and tackling all forms of abuse and neglect, and in promoting children's welfare, including their educational outcomes. Schools and colleges have clear powers to share, hold and use information for these purposes.

We expect all staff to share information with practitioners and local agencies. We are committed to sharing information as early as possible to help identify, assess and respond to risks or concerns about the safety and welfare of children, whether this is when problems are first emerging, or where a child is already known to the local authority children's social care. Where children of the same family attend different education settings the DSL (or a deputy) will work with the DSLs of the other settings to ensure effective information sharing to help to identify, assess and respond to risks or concerns about the safety and welfare of children in the same family.

All child protection records are clearly marked as such and are kept securely locked on the premises and within CPOMS, the nominated persons are responsible, accountable, documented and are identifiable within our setting for total security. Also, procedures are in place when a member of staff leaves the setting or is on long term sick leave for their access to cease. Withdrawal of child protection records from our setting by staff will be noted and signed for, as will files released to professionals.

The child protection file is a separate file to the educational records. It must be noted that if files are asked to be secured, both files are key elements in any processes for which they are needed. It is important that on releasing files they are signed for on release and on return.

Pupil record files must be kept until the individual reaches the age of 25 years or in certain circumstances later. At this point the file should be disposed of confidentially.

In respect of files being released when requested by the Police under Section 29 of the Data Protection Act 2018 a form entitled 'Request to external organisation for the disclosure of personal data to the police-Under Schedule 2 Part 1 Paragraph 2 of the Data Protection Act 2018 and GDPR Article 6(1)d' should accompany that release and a copy will be retained for our records.

This school will also seek advice and adopt the [Information sharing advice for safeguarding practitioners](#). If in any doubt we will seek advice from our **Data Protection Officer**. Upon releasing records, the school will request ID Badges for release. If the Police are only after minimal data e.g., address or phone number, we will ensure we check the police ID and we will record what information was asked for and the name of the police officer requesting it. A permission form may not be required on these occasions.

No named statistics in relation to child protection are an important part of performance information. These may be shared by the DSL with staff, other agencies or the governing body/proprietor/management committee.

In our management of information sharing we will use the following:

- Chapter one of [Working Together to Safeguard Children](#), which includes a myth-busting guide to information sharing;
- [Information Sharing: Advice for Practitioners Providing Safeguarding Services to Children, Young People, Parents and Carers](#). The seven golden rules for sharing information will be especially useful;
- The [Information Commissioner's Office \(ICO\)](#), which includes ICO GDPR FAQs and guidance from the department; and
- [Data protection: toolkit for schools](#) - Guidance to support schools with data protection activity, including compliance with the GDPR.

When a child leaves the school, the DSL will ensure their child protection file is transferred to the new school or college as soon as possible (within five working days of the child starting at their new school or college), ensuring secure transit, and confirmation of receipt will be obtained. We will transfer the child protection file separately from the main pupil file. As a receiving school we will ensure key staff such as DSL's and SENDCO's, are aware as required. On receiving the child protection and safeguarding record for each child a DSL or a deputy will ensure a note is entered on to the child's child protection and safeguarding record and summarise any concerns from the information they have received.

In addition to the child protection file. The DSL will share any relevant safeguarding information with the new school or college in advance of a child leaving, including where a child has been or is open to 'Channel' Panel. If we are the current host school, we will **not** photocopy and retain child protection records. This is deemed from the Information Commissioners Office that this would contravene The Data Protection Act 2018, but rather produce a chronology to pass on with the child protection records and retain a copy of this chronology for themselves for audit purposes, this would be deemed as best practice.

All child protection records are reviewed annually in the summer term by the DSL (or a deputy) and checked to be chronological, tidy, legible and factual in content. The exception to this is safeguarding records where there are concerns of CSE, these are checked by the DSL every six months. This should be undertaken each year, as records may sometimes be immediately required by professionals. Where reports are needed for child protection and safeguarding meetings, these should include attendance figures.

Fears about sharing information must not be allowed to stand in the way of the need to safeguard and promote the welfare of children.

We will follow the guidance on the child protection file set out in Annex C KCSIE.

Opportunities to teach safeguarding

We will teach children about how to keep themselves and others safe, including online. Our RSHE curriculum is delivered in accordance with the RSHE Statutory Guidance July 2025. It is age-appropriate, inclusive, and designed to equip pupils with the knowledge and skills to recognise and report abuse, understand healthy relationships, and manage their mental and physical wellbeing. RSHE contributes to our wider safeguarding culture and is responsive to the needs of our pupils

We will ensure that appropriate filters and monitoring systems that are in place, do not lead to unreasonable restrictions as to what children can be taught with regard to online teaching and safeguarding.

Safeguarding themes are integrated across the curriculum, including RSHE, computing, and pastoral education. Lessons are adapted to meet the needs of SEND and EAL learners, and pupil voice is used to inform curriculum planning. Staff are trained to deliver safeguarding content in an age-appropriate and inclusive manner.

Please see 'How our curriculum keeps children safe' in appendix.

Online safety

We recognise online safety is a major concern for all professionals.

We believe it is essential that children are safeguarded from potentially harmful and inappropriate online material.

The aim of our approach to online safety is empowerment to protect and educate pupils and staff in their use of technology and establish mechanisms to identify, intervene in, and escalate any concerns where appropriate. We will ensure appropriate filtering and monitoring on school/college devices and networks. We aim to protect children from illegal, inappropriate or harmful content, and harmful online interaction with other users. We aim for our pupils to exhibit positive personal online behaviour and recognise inappropriate online conduct. We aim to protect children from commercial risks.

The breadth of issues classified within online safety is considerable, but can be categorised into four areas of risk:

- **content:** being exposed to illegal, inappropriate, or harmful content, for example: pornography, racism, misogyny, self-harm, suicide, anti-Semitism, radicalisation, extremism, misinformation, disinformation (including fake news) and conspiracy theories.
- **contact:** being subjected to harmful online interaction with other users; for example: peer to peer pressure, commercial advertising and adults posing as children or young adults with the intention to groom or exploit them for sexual, criminal, financial or other purposes.
- **conduct:** online behaviour that increases the likelihood of, or causes, harm; for example, making, sending and receiving explicit images (e.g. consensual and non-consensual sharing of nudes and semi-nudes and/or pornography, sharing other explicit images and online bullying, and
- **commerce:** risks such as online gambling, inappropriate advertising, phishing and or financial scams. If we feel our pupils, students or staff are at risk, we will report it to the Anti-Phishing Working Group (<https://apwg.org/>).

We will ensure online safety is a running and interrelated theme whilst devising and implementing policies and procedures. This will include considering how online safety is reflected as required in all relevant policies and considering online safety while planning the curriculum, any teacher training, the role and responsibilities of the DSL (and deputies) and any parental engagement.

We meet the DfE's Filtering and Monitoring Standards (2023) and conduct an annual review of our systems, including a risk assessment of online access and exposure. In accordance with KCSIE 2025 Annex C, our DSL and Online Safety Lead understand the filtering and monitoring systems in place, are trained to manage them effectively, and know how to escalate concerns appropriately. We ensure our filtering and monitoring provision is proportionate to the risks faced by our pupils and supports a safe online environment.

In line with the Department for Education's Generative AI: Product Safety Expectations (2025), our setting recognises the importance of ensuring that any generative AI tools used in school are safe, age-appropriate, and aligned with our safeguarding responsibilities.

We will ensure that:

- AI tools are risk-assessed before use, with particular attention to safeguarding, data protection, and misinformation risks.
- Staff and pupils are educated on the limitations of generative AI, including the potential for bias, hallucinated content, and inappropriate outputs.
- Generative AI is not used for decision-making about individual pupils, especially in relation to safeguarding, behaviour, or SEND provision.
- Children's data and intellectual property are protected, and AI tools are only used in line with our data protection and filtering policies.
- AI-generated content is critically evaluated, and pupils are taught to question the reliability and origin of digital content, including deepfakes and synthetic media.
- Staff are trained to understand the risks and opportunities of AI in education and to model responsible use.
- We will only adopt generative AI tools that meet the DfE's safety expectations and will review their use regularly as part of our digital safeguarding strategy

We take seriously our duties to assist parents and help them with online safeguarding resources. As such, we will make them aware of relevant support services.

Where children are being asked to learn online at home we will follow the advice to support schools and colleges do so safely: [safeguarding in schools colleges and other providers](#) and [safeguarding and remote education](#). We recognise the NSPCC and PSHE Association also provide helpful advice.

Through our regular communications with parents, we will reinforce the importance of children being safe online and tell parents what systems we use to filter and monitor online use. We will make parents aware of what their children are being asked to do online, including the sites we asked them to access. We will always be clear who from our school/college (if anyone) a child is going to be interacting with online.

While considering our responsibility to safeguard and promote the welfare of children and provide them with a safe environment in which to learn, we will do all that we reasonably can to limit children's exposure to risks from our IT system. We will ensure we have appropriate filters and monitoring systems in place. The leadership team and relevant staff, such as online safety lead will obtain an understanding of the filtering and monitoring provisions in place and manage them effectively and know how to escalate concerns when identified. We will do this by considering the age range of our children, the number of children, how often they access the IT system and the proportionality of costs versus risks.

The appropriateness of our filters and monitoring systems have been informed in part, by the risk assessment required by the Prevent Duty. To meet this duty we will work to meet the [digital and technology standards](#). We will:

- identify and assign roles and responsibilities to manage filtering and monitoring systems.
- review filtering and monitoring provision at least annually.
- block harmful and inappropriate content without unreasonably impacting teaching and learning.
- have effective monitoring strategies in place that meet safeguarding needs.

We have the appropriate level of security protection in place, in order to safeguard our systems, staff and learners and we will review the effectiveness of these procedures periodically to keep up with evolving cyber-crime technologies.

We will carry out an annual review of our approach to online safety, supported by an annual risk assessment that considers and reflects the risks their children face.

Our governing body will question school leaders to gain a basic understanding of our approach to keeping children safe online; learn how to improve this approach where appropriate; and find out about tools, which can be used to improve the approach.

Mentors of trainee teachers and newly qualified teachers induct mentees and provide ongoing support, development and monitoring on online safety.

As a maintained school we adhere to The Corporate Information Security Policy (CISP) including Acceptable Use of Equipment and the Social Media Policy-Acceptable Use for Employees. We will make all aware of its existence and importance. Where appropriate, intervention will take place when anyone uses e-technology in an unacceptable fashion.

Non-maintained/controlled schools need to insert information about your own information technology policies.

Mobile and smart technology

Please see our policy on the safe use of mobile and smart technology.

We recognise that many children have unlimited and unrestricted access to the internet via mobile phone networks. This access means some children, while at our setting sexually harass, bully, and

control others, via their mobile and smart technology, share indecent images consensually and non-consensually and view and share pornography and other harmful content.

All staff and visitors will not use or access mobile or smart technology on the premises when children are present. They are stored securely in the staff lockers in the staff room and can only be accessed in this room, when children are not present.

Inspection

We recognise our responsibilities for safeguarding within the remit of Ofsted.

The use of 'reasonable force'

There are circumstances when it is appropriate for staff in our setting to use reasonable force to safeguard children and young people. The term 'reasonable force' covers the broad range of actions used by staff that involve a degree of physical contact to control or restrain children. This can range from guiding a child to safety by the arm, to more extreme circumstances such as breaking up a fight or where a young person needs to be restrained to prevent violence or injury. 'Reasonable' in these circumstances means us 'using no more than is needed.' Our use of force may involve either passive physical contact, such as standing between pupils or blocking a pupil's path, or active physical contact such as leading a pupil by the arm out of the classroom.

We will always follow the advice for schools on the Use of [Reasonable Force in Schools](#). We will also have regard to additional guidance [Reducing the Need for Restraint and Restrictive Intervention](#) for children and young people with learning disabilities, autistic spectrum conditions and mental health difficulties in health and social care services and special education settings.

We believe that the adoption of a 'no contact' policy in our setting could leave staff unable to fully support and protect our pupils and students. We will adopt a sensible approach allowing staff to make appropriate physical contact. The decision on whether to or not to use reasonable force to control or restrain a child is down to the professional judgement of the staff concerned and should always depend on individual circumstances.

When using reasonable force in response to risks presented by incidents involving children with SEND, mental health or with medical conditions, we will consider the risks carefully because we recognise the additional vulnerability of these groups. We will consider our duties under the Equality Act 2010 in relation to making reasonable adjustments, non-discrimination and our Public Sector Equality Duty.

We will plan positive and proactive behaviour support, for instance through drawing up individual behaviour plans for more vulnerable children, and agreeing them with parents and carers, we aim to reduce the occurrence of challenging behaviour and the need to use reasonable force. We will only use reasonable force where de-escalation processes have failed.

Hiring out our facilities and premises

Where we hire or rent out our facilities/premises to organisations or individuals (for example to community groups, sports associations, and service providers to run community or extra-curricular activities) we will ensure that appropriate arrangements are in place to keep children safe.

When services or activities are provided by us, under our own direct supervision or management, our own arrangements for child protection will apply. However, where services or activities are provided separately by another body this is not necessarily the case. We will therefore seek assurance that the body concerned has appropriate safeguarding and child protection policies and procedures in place including inspecting these; and ensure that there are arrangements in place to liaise with us on these matters where appropriate. We will also ensure safeguarding requirements are included in any transfer of control agreement (i.e., lease or hire agreement), as a condition of use and occupation of the premises; and that failure to comply with this may lead to termination of the agreement.

The guidance on [Keeping children safe in out-of-school settings](#) details the safeguarding arrangements that schools and colleges should expect these providers to have in place.

In any event where we feel there is reputational risk to our organisation, we will withdraw from any hire agreement of our premises. We will ensure the hirer acknowledges that our school/college has a duty under Section 26 of the Counter Terrorism and Security Act 2015 in the exercise of its functions to have “due regard to the need to prevent people from being drawn into terrorism” (the “Prevent Duty”). We will ensure the hirer uses our premises in such a way as to satisfy the Prevent Duty. We will take all reasonable steps to ensure our premises are not used by any groups or speakers in support of any extremist ideology.

Alternative provision

The cohorts of pupils in Alternative Provision often have complex needs. As a governing body/proprietor of this Alternative Provision setting, we are aware of the additional risk of harm that our pupils may be vulnerable to.

We will follow the statutory guidance for commissioners of Alternative Provision.

We will maintain up-to-date records of the address of the alternative provision provider, including any subcontracted or satellite sites the pupil may attend. We will ensure that we always know where the pupil is during school hours. We will review all alternative provision placements at least half-termly to ensure:

- the pupil is attending regularly,
- the placement remains safe and appropriate,
- and the provision continues to meet the pupil’s needs.

Where safeguarding concerns arise, we will immediately review the placement and, if necessary, terminate it unless or until those concerns are satisfactorily addressed.

Absent and missing from education

We believe children being absent from education for prolonged periods and/or on repeat occasions can act as a vital warning sign to a range of safeguarding issues. Our response to persistently absent pupils and children absent from education will support identifying such abuse, and in the case of absent pupils, helps prevent the risk of them becoming a child absent from education in the future. This includes when problems are first emerging but also where children are already known to local authority children's social care and need a social worker (such as a child who is a child in need or who has a child protection plan, or is a looked after child), where being absent from education may increase known safeguarding risks within the family or in the community.

The recognised figure for severely absent is 50% or less and persistent absence is being less than 90%, although concerns may still be raised if above this. We will require the behaviour and attendance lead to refer to and use the established protocol document of notification to the Local Authority, filling out the appropriate paperwork, policies and procedures for identifying all pupils who are absent from education and policies and procedures for pupils on a modified timetable (available from Telford & Wrekin Council). We recognise that pupils who are not accessing full time education are at greater risk of abuse, neglect and exploitation than other children. We therefore aim to reduce the number of pupils accessing a modified timetable. We will ensure any pupils accessing a modified timetable are seen regularly by school/college staff to help to ensure their safety and welfare. It is our aim that pupils access modified timetables for the limited periods of time and children who on a child protection, child in need plan and/or have an Education Health Care Plan are not placed on a modified timetable. We will regularly monitor and review the use of modified timetables.

In addition to the above and where reasonably possible we will endeavour to hold more than one emergency contact number for each pupil. This goes beyond the legal minimum and is good practice to give us additional options to make contact with a responsible adult when a child is absent from education and poses a potential welfare/safeguarding concern. Where a child is on a Child Protection Plan has been absent from school for two consecutive days, we will notify the child's allocated social worker.

Where children leave the classroom or leave our grounds without permission, this is covered within our behaviour management policy and is also set against the backdrop of the legal framework of the Children Act 1989 s3 (5); 'Anyone who has care of a child without parental responsibility may do what is "reasonable" in all the circumstances to safeguard and promote the child's welfare. It is likely to be "reasonable" to inform the police, or children's services departments, and, if appropriate, their parents, of the child/young person's safety and whereabouts'. However, in principle, if a pupil runs out of class we will establish where he or she has gone. Staff will not run after them but will seek additional support. It is advisable to keep a watchful eye on any children who has taken themselves out of our building and possibly out of our grounds, unless this watchful eye provokes the child to run further. It is and will be a judgement call for staff to take what they feel is **reasonable** action in line with the advice above. If a child is no longer on the premises, we will contact parents in the first instance. If they are not contactable, we will inform the police that a pupil has left and is at risk.

Where children go missing, including leaving school/college without permission, we will follow the [West Mercia Pathway for Children who go Missing from Home, care or Education](#). We always deem it appropriate to report pupils who go missing from school to the Police and children's services where we or parents cannot locate the child quickly.

Elective Home Education (EHE)

We understand that many home educated children have a positive learning experience. We would expect that any parents' decision to home educate to be made with their child's best education at the heart of the decision. However, we know this is not the case for all. Elective home education can mean that some children are not in receipt of suitable education and are less visible to the services that are there to keep them safe and supported in line with their needs.

From September 2016 the Education (Pupil Registration) (England) Regulations 2006 were amended. This means we inform Telford & Wrekin Council of all deletions from our admission register when a child is taken off roll.

Where a parent/carer has expressed their intention to remove a child from school with a view to educating at home, we will facilitate a meeting with the local authority education team, ourselves and other relevant schools, other key professionals and where possible parents/carers. Ideally, this will be before a final decision has been made, to ensure the parents/carers have considered what is in the best interests of each child. This is particularly important where a child has SEND, is vulnerable, and/or has a social worker. We will invite the local authority education team by emailing ehe@telford.gov.uk.

Where parents intend to electively home educate their child/ren we will work with the local authority elective home education team to consider, plan for and ensure ongoing support for the child's safeguarding and welfare needs at the point the child/ren become electively home educated.

We understand it is our responsibility to identify parents or carers who we need to meet with to discuss EHE before they make their final decision. We will record if parents refuse to attend this meeting. If parents decline this meeting, we will still meet with the local authority.

We will follow the Telford & Wrekin Council, [EHE pathway](#).

Children who need a social worker (Child in Need and Child Protection Plans)

Children may need a social worker due to safeguarding or welfare needs. Children may need this help due to abuse and/or neglect and/or exploitation and/or complex family circumstances. A child's experiences of adversity and trauma can leave them vulnerable to further harm, as well as educationally disadvantaged in facing barriers to attendance, learning, behaviour and mental health.

Local authorities should share the fact a child has a social worker, and the DSL will hold and use this information so that decisions can be made in the best interests of the child's safety, welfare and educational outcomes.

Where children need a social worker, this information will be used by the DSL (or deputies) to inform decisions about safeguarding (for example, responding to unauthorised absence or missing education where there are known safeguarding risks) and about promoting welfare (for example, considering the provision of pastoral and/or academic support, alongside action by statutory services).

Children requiring mental health support

We recognise that we have an important role to play in supporting the mental health and wellbeing of our pupils.

Mental health concerns can, in some cases, be an indicator that a child has suffered or is at risk of suffering abuse, neglect or exploitation. The governing body have put clear systems and processes in place for identifying possible mental health concerns, including routes to escalate and clear referral and accountability systems.

We will help prevent mental health concerns by promoting resilience as part of our integrated, whole setting approach to social and emotional wellbeing, which is tailored to the needs of our pupils.

Our senior mental health lead is Sarah Abdulla. They are a member of our senior leadership team. The appointed member of our senior leadership team who supports our senior mental health lead is **Natalie Woods.**

Please see our mental health and well-being policy.

Suicide Intervention

We accept and understand that thoughts of suicide are common and the leading cause of death in young people. As such, suicide intervention is our business too. We to work with our pupils and work in partnership to support anyone in our community that may have thoughts of suicide. We will follow our Suicide Intervention Policy to assist wherever we can in making those in our care as safe as is possible. We will also make staff aware of the following useful link in raising awareness of the subject <http://zerosuicidealliance.com/>

Looked after children and previously looked after children

We recognise that the most common reason for children becoming looked after is as a result of abuse and/or neglect. All staff at our setting have the knowledge and skills to keep looked after children safe. The DSL will hold the details of each child's social worker and the name of the virtual school head in the authority that looks after the child. They are responsible for ensuring all staff have the information they need in relation to a child's looked after status and the child's contact arrangements with birth parents or those with parental responsibility. They will also have information about the child's care arrangements and the levels of authority delegated to the carer

by the authority looking after him/her and for championing the educational attendance, attainment and progress of children in kinship care.

We recognise a previously looked after child potentially remains vulnerable.

When dealing with looked after children and previously looked after children we will work with all agencies to take prompt action where necessary to safeguard these children.

The designated teacher

The governing body appointed **Sarah Abdulla and Natalie Woods** as the designated teacher to work with the local authorities to promote the educational achievement of registered pupils who are looked after. With the commencement of sections 4 to 6 of the Children and Social Work Act 2017, designated teachers have responsibility for promoting the educational achievement of children who have left care through adoption, special guardianship or child arrangement orders or who were adopted from state care outside England and Wales. The designated teacher has appropriate training and relevant qualifications and experiences to fulfil this role.

We will follow the statutory guidance on [The Roles and Responsibilities of the Designated Teacher](#).

Virtual School Heads and Kinship Care

As a maintained school, the designated teacher will work with the virtual school head to discuss how funding can be best used to support the progress of looked after children in the school and meet the needs identified in the child's personal education plan. The designated teacher also works with the virtual school head to promote the educational achievement of previously looked after children. We will follow the statutory guidance on 'Promoting the Education of Looked After Children.'

As a non-maintained school we have an appropriately trained teacher who will take the lead in working with the virtual school head. The teacher works with the virtual school head to discuss how funding can be best used to support the progress of looked after children in the school and meet the needs identified in the child's personal education plan. The teacher also works with the virtual school head to promote the educational achievement of previously looked after children. We will follow the statutory guidance on 'Promoting the Education of Looked After Children.'

The role of Virtual School Heads includes a non-statutory responsibility to promote the educational achievement of all children in kinship care. We recognise the importance of this role in supporting children living in informal and formal kinship arrangements, who may face additional barriers to education.

We will work with the Virtual School Head in line with the non-statutory guidance 'Promoting the education of children with a social worker and children in kinship care arrangements' to ensure that these pupils receive appropriate support and that their needs are reflected in our safeguarding and pastoral systems.

The DSL, Headteacher, governors, SENCO and senior mental health lead will work with the virtual school head to promote educational attendance, attainment and progress of children with a social worker.

The virtual school head for Telford and Wrekin is: **Michelle Salter**.

Children who have special educational needs and disabilities (SEND) or health issues

We recognise that children who have SEND or certain health or physical health conditions can face additional safeguarding challenges. We accept the additional barriers that can exist when recognising abuse and neglect of children in this group of children. These can include:

- assumptions that indicators of possible abuse such as behaviour, mood and injury relate to the child's disability without further exploration;
- being more prone to peer group isolation than other children;
- the potential for children with SEND being disproportionately impacted by behaviours such as bullying, without outwardly showing any signs; and
- communication barriers and difficulties in overcoming these barriers.

To help address these additional challenges we will provide extra pastoral support for children with SEND. For any reports of abuse involving children with SEND, the DSL (or a deputy) and the SENCO will liaise closely.

Children who are lesbian, gay, bisexual, or gender questioning

This section of our policy remains under review, pending the gender questioning guidance being published.

In line with KCSIE 2025, we take a cautious and proportionate approach to supporting gender questioning children. We will work in partnership with parents (unless doing so would place the child at risk), and consider clinical advice and wider vulnerabilities, including mental health and safeguarding risks.

We recognise that a child or a young person being lesbian, gay, or bisexual is not in itself an inherent risk factor for harm. However, they can sometimes be targeted by other children. In some cases, a child who is perceived by other children to be lesbian, gay, or bisexual (whether they are or not) can be just as vulnerable as children who identify as LGBT.

The Cass review identified that caution is necessary for children questioning their gender as there remain many unknowns about the impact of social transition and children may well have wider vulnerabilities, including having complex mental health and psychosocial needs, and in some cases additional diagnoses of autism spectrum disorder and/or attention deficit hyperactivity disorder.

It recommended that when families/carers are making decisions about support for gender questioning children, they should be encouraged to seek clinical help and advice. When parents are

supporting pre-pubertal children, clinical services should ensure that they can be seen as early as possible by a clinical professional with relevant experience.

When supporting a gender questioning child, we will take a cautious approach and consider the broad range of their individual needs, in partnership with the child's parents (other than in the exceptionally rare circumstances where involving parents would constitute a significant risk of harm to the child), including any clinical advice that is available and how to address wider vulnerabilities such as the risk of bullying.

Risks can be compounded where children who are lesbian, gay, or bisexual lack a trusted adult with whom they can be open. All staff will endeavour to reduce the additional barriers faced and create a culture where they can speak out or share their concerns with members of staff. Our RSHE curriculum includes content on equality, respect for others, and the law. It is inclusive of all pupils and reflects the diverse backgrounds and identities of our school community, including those who are LGBT. This is in line with the RSHE Statutory Guidance (2025) and the Equality Act 2010.

Legal Definition of Sex and Equality Act Compliance

In line with the UK Supreme Court judgment (*For Women Scotland v The Scottish Ministers*, 2024) and the Equality and Human Rights Commission's interim guidance (April 2025), we recognise that under the Equality Act 2010, the protected characteristic of "sex" refers to 'biological sex.' **This means:**

- A "woman" is a biological female.
- A "man" is a biological male.
- A person who identifies as transgender does not change their legal sex for the purposes of the Equality Act, even if they hold a Gender Recognition Certificate.

We will ensure that our safeguarding, curriculum, facilities, and equality practices reflect this legal definition. Where single-sex services or spaces are provided, decisions will be made in accordance with the Equality Act 2010 and relevant statutory guidance, with due regard to the safety, dignity, and privacy of all pupils. We will continue to support all pupils with sensitivity and respect, while ensuring compliance with our legal duties under the Equality Act 2010.

Staff

All staff, supply staff, contractors and visitors, are informed of the name of the DSL and deputies and our procedures for protecting children, for example, how to report their concerns, suspicions and how to receive, record and report disclosures.

Staff should not accept personal invitation visits to the homes of children unless permission or instruction has been sought from the Headteacher and it is viewed as a professional appointment, for example, supporting education welfare issues etc. This should be viewed on a case-by-case basis. To support this, guidance from the Department of Education (September 2010) states 'Meetings

with pupils away from the school premises should only be arranged with the specified approval of the head teacher and the prior permission of the pupil in question'. We accept this guidance from the Department of Education (September 2010) stating that in the case of private meetings; 'Staff and volunteers should be aware that private meetings with individual pupils could give cause for concern. There will be occasions when a confidential interview or a one-to-one meeting is necessary. Such interviews should be conducted in a room with visual access or an area which is likely to be frequented by other people. Another pupil or adult should be present or nearby. Where conditions cannot apply, staff should ensure that another adult knows that the interview is taking place'.

Parents

Parents play an important role in protecting their children from abuse. We are required to consider the safety of the child and should a concern arise, professional advice may be sought prior to contacting parents. If deemed appropriate, parents will be contacted, and we will continue to work with them to support the needs of their child. Consent from the parents will be sought, although in exceptional circumstances and with the best interests of the child being considered, this may be overridden.

We aim to help parents to understand their responsibility for the welfare of all children, which includes their duty to refer cases to social care services and/or police in the interests of the child. In line with Working Together to Safeguard Children 2023, we aim to build positive, trusting, and co-operative relationships with parents and carers. We recognise that effective safeguarding is most successful when families are engaged as partners in the process of support and protection. In line with RSHE statutory guidance, we are transparent with parents about the content of our RSHE curriculum. Parents have the right to request withdrawal from sex education (but not relationships or health education), and we will work in partnership with them to address any concerns. We also ensure that any external agencies or resources used in RSHE are carefully vetted and align with our safeguarding principles. The governing body will include a child protection statement in our prospectus and all parents can view a copy of this policy.

Parents that have concerns regarding a member of staff can in the first instance raise those with the Headteacher. This may involve sharing those concerns with the relevant agencies. Where the parent has concerns regarding the Headteacher, the chair of governors should be consulted in the first instance.

Parents can liaise with Ofsted on such conduct issues or regulatory concerns, advice can be found on its website www.ofsted.gov.uk.

On occasions Ofsted may forward complaints that may raise a safeguarding concern about our school via Family Connect. In such instances, we will work with all agencies within Family Connect to clearly respond to Ofsted on a case by case basis.

Parents/Carers can also access Ofsted [Parent View](#) which is an online survey questionnaire where parents can give their views. Where possible, this will be monitored regularly by the school/college to quickly address any concerns.

All complaints should be made via our complaint's procedures.

We will keep parents informed of all areas of safeguarding and child protection through the regular methods of communication.

We wish to make it clear to parents the standards, behaviour and respect we expect from them and conversely from us. If a parent's behaviour is a cause for concern, then we will ask them to leave our premises. We wish to make it clear that in serious cases, the head teacher can/will notify parents in writing that their implied licence to be on our premises is temporarily revoked, subject to any representations that the parent may wish to make. This setting will give parents the opportunity to formally express their views on the decision to bar in writing and this will be reviewed via the complaints policy.

Our setting is private place. We will therefore act to ensure they remain a safe place for all. The public has no automatic right of entry.

We expect parents to talk to us about any concerns they have about care and education provided by us in the first instance. We urge all parents not to express these concerns on social media platforms, at least not before sharing these concerns with us first.

Changing in school

We consider arrangements for safe changing of children for physical education (PE). We will be guided by the NSPCC guidance Best Practice for PE Changing Rooms. This consideration will come under our duty and remit of health & safety and in the context of children's welfare. We follow the guidance and do what we need to do in relation to organising changing facilities for children; staff supervision; changing areas for children with additional needs; changing considerations for drama productions and using off-site changing rooms. [NSPCC factsheet](#)

Part three: Safer Recruitment

We will meet all requirements as set out in Part three: Safer recruitment KCISE.

We commission Telford and Wrekin human resources service to assist in the management of safer recruitment procedures.

Please see our safer recruitment procedures.

Recruitment and selection process

We aim to create a culture that safeguards and promotes the welfare of all children. As part of this culture, we will adopt robust recruitment procedures that help to deter and prevent people who are unsuitable to work with children from applying for or securing employment, or volunteering opportunities in our setting. We follow the safer recruitment procedures outlined in Part Three of KCSIE 2025, including checks for regulated activity, overseas checks, and recording of vetting information.

We will ensure that **all** those involved with the recruitment and employment of staff to work with children have received appropriate safer recruitment training. As a result, all interview panel members will have completed safer recruitment training.

The following persons have completed safer recruitment training in our setting:

Sarah Abdulla

Stephen Reynolds

Clare Jenkins

Pre-appointment vetting checks, regulated activity and recording information

We will abide by the legal requirements when appointing individuals to engage in regulated activity relating to children. We understand the importance of ensuring the correct pre-appointment checks are carried out. These checks will help us to identify whether a person may be unsuitable to work with children (and in some cases is legally prohibited from working with children and/or working as a teacher). We see this as part of our wider safeguarding regime which will carry on following appointment.

Other checks that may be necessary for staff, volunteers and others

We will carry out the checks that are necessary for individuals who have lived or worked outside the UK; agency and third-party staff; contractors; trainee teachers; volunteers; governors and proprietors. We will fulfil our responsibilities in relation to other settings, including alternative provision, work experience and host families.

Visitors

We have different types of visitors, those with a professional role, those connected with the building, grounds maintenance, children's relatives or other visitors attending an activity.

We will not request DBS checks or barred list checks, or ask to see existing DBS certificates, for visitors such as children's relatives or other visitors attending a sports day. The Headteacher/Principal will use their professional judgment about the need to escort or supervise such visitors.

For visitors who attend our setting in a professional capacity we will check their ID and seek assurance that the visitor has had the appropriate DBS check (or the visitor's employers have confirmed that their staff have appropriate checks). We will not ask to see DBS certificates.

Whilst external organisations can provide a varied and useful range of information, resources and speakers that can help us enrich children's education; careful consideration will be given to the suitability of any external organisations.

Alternative provision

Where we place a pupil with an alternative provision provider, we continue to be responsible for the safeguarding of that pupil and will undertake checks to be satisfied that the provider meets the needs of the pupil.

We will obtain written confirmation from the alternative provider that appropriate safeguarding checks have been carried out on individuals working at the establishment. We will also obtain written confirmation that the alternative provider will inform us of any changes in staffing or other arrangements that may affect the safety or welfare of the pupil, so that we can ensure appropriate safeguarding checks are carried out on new staff.

Please see our Alternative provision policy.

Adults who supervise children on work experience

Children's barred list checks via the DBS might be required on some people who supervise a child under the age of 16 on a work experience placement. We will consider the specific circumstances of the work experience and give consideration in particular to the nature of the supervision and the frequency of the activity being supervised, to determine what, if any, checks are necessary. These considerations will include whether the person providing the teaching/training/instruction/supervision to the child on work experience will be:

- unsupervised themselves, and
- providing the teaching/training/instruction frequently (more than three days in a 30-day period, or overnight).

If the person working with the child is unsupervised and the same person is in frequent contact with the child, the work is likely to be regulated activity relating to children. If so, we may ask the employer providing the work experience to ensure that the person providing the instruction or training is not a barred person.

We are not able to request that an employer obtains an enhanced DBS check with children's barred list information for staff supervising children aged 16 to 17 on work experience. If an activity

undertaken by a child on work experience takes place in a 'specified place', such as a school or sixth form college, and gives the opportunity for contact with children, this may itself be considered to be regulated activity relating to children.

Children staying with host families (homestay)

If we arrange a homestay, we will consider the suitability of the adults in the respective families who will be responsible for the visiting child during the stay.

We will always consider what intelligence/information will best inform our assessment of the suitability of the adults in those families who will be responsible for the visiting child during the stay. We will use our professional judgement to decide what will be relevant. To help inform our assessment, we will obtain a DBS enhanced certificate with barred list information. This check will not only establish whether the adults are barred from engaging in regulated activity relating to children, but where criminal record information is disclosed, it will also allow us to consider, alongside all other intelligence that we have obtained, whether the adults would be a suitable host for a child. We will also decide whether it is necessary to obtain a DBS enhanced certificate in respect of anyone aged 16 or over in the household where the child will be staying.

Host families – homestay during exchange visits

We have a duty to safeguard and promote children's welfare. This extends to considering their safety and how best to minimise risk of harm to those children during any exchange visit we arrange, and when organising for the care and accommodation of a child with a host family (known as homestays) as part of the exchange.

We will follow the guidance set out in Annex E of KCSIE with regard to arranging homestay – suitability of adults in UK host families, homestay – suitability of adults in host families abroad and the additional action for extended homestays.

We will always ensure pupils understand who to contact during a homestay, should an emergency occur or a situation arise which makes them feel uncomfortable.

Private fostering

We recognise that a private fostering arrangement occurs when a child under the age of 16 (under 18, if disabled) is provided with care and accommodation by a person who is not a parent, person with parental responsibility for them or a relative in their own home.

A child is not privately fostered if the person caring for and accommodating them has done so for less than 28 days and does not intend to do so for longer. Such arrangements may come to the attention of school staff through the normal course of their interaction, and promotion of learning activities, with children.

By law, a parent, private foster carer or other persons involved in making a private fostering arrangement must notify children's social care as soon as possible. If we become aware of a private

fostering arrangement for a student that has not been notified to children's social care, we will encourage parents and private foster carers to notify them and will share information with children's social care as appropriate.

Our ongoing safeguarding of children and the legal reporting duties on us

We understand the importance of safeguarding vigilance beyond the recruitment process.

We believe safer recruitment is not just about carrying out the right DBS checks. Similarly safeguarding should not be limited to recruitment procedures. Good safeguarding requires a continuing commitment from our whole community to ensure the safety and welfare of children is embedded in all of our processes and procedures, and consequentially enshrined in our ethos.

We aim to promote continuous vigilance, maintaining an environment that deters and prevents abuse and challenges inappropriate behaviour.

We aim to create the right culture and environment so that our staff feel comfortable to discuss matters both within, and where it is appropriate, outside of the workplace, which may have implications for the safeguarding of children. This can help assist us as employers to support staff, where there is a need, and help them manage children's safety and welfare. Potentially providing them with information that will help them consider whether there are further measures or changes to procedures that need to be put in place to safeguard children in our care.

We will undertake our duty to refer to the Disclosure and Barring Service and to the Teaching Regulation Agency where required.

Appendix: Protective Security and Preparedness

This appendix outlines how the setting aligns with the Department for Education's guidance on Protective Security and Preparedness for Education Settings (April 2025).

Embedding a Security Culture

The setting promotes a whole-setting approach to security awareness and preparedness. All staff receive training to identify suspicious activity and understand their role in maintaining a secure environment. Security is embedded within the safeguarding culture and emergency planning processes.

2. Staff Roles in Protective Security

The Headteacher is designated as the Security and Incident Lead. All staff, including non-teaching staff, are briefed on their responsibilities in the event of an incident. These roles are defined in the emergency plan and reviewed annually.

Tailoring Emergency Plans to the Setting

The emergency plan is tailored to the site layout, pupil needs, and local risks. Vulnerabilities such as building access, location, and events are considered. Plans are tested annually through drills and reviewed following any incidents.

RUN HIDE TELL Protocols

All staff and pupils are trained in the RUN HIDE TELL principles. Age-appropriate materials are used to educate pupils on how to respond to threats. Visual reminders, such as posters are displayed in key areas.

Grab Kits

Grab kits are maintained in the school office and include site maps, contact lists, first aid supplies, high-visibility vests, and emergency communication tools. These kits are checked termly and updated as needed.

Communication During an Incident

Procedures are in place for internal and external communication during incidents. The Headteacher or a designated deputy liaises with emergency services and the local authority. Parents are informed via the emergency communication system.

Post-Incident Welfare and Review

Welfare support is provided to pupils and staff following incidents, including access to counselling. A post-incident review is conducted to evaluate the response and update plans. Lessons learned are shared with staff and governors.

Training and Resources

Staff complete the ACT for Education e-learning module annually. The setting uses the Protective Security and Preparedness self-assessment tool to review readiness. Staff receive annual safeguarding updates, which includes security preparedness.



How we promote safeguarding through the curriculum September 2024



www.teaguesbridgeprimary.org



How the curriculum keeps our children safe

At Teagues Bridge Primary School the protection of children is the responsibility of everyone. We aim to make everyone within the school feel safe and we have clear roles and responsibilities in place for this to happen. Safeguarding is carefully woven into our curriculum offer, ensuring that children have a broad understanding of how our school helps to keep them safe whilst in the classroom and beyond.

All schools have responsibilities relating to the safety of children in their care. Paragraph 41 of statutory guidance on 'Keeping children safe in Education', the Department for Education states: 'Schools should consider how children may be taught about safeguarding, including online, through teaching and learning opportunities. This may include covering relevant issues through PSHE' and RSHE.

Safeguarding area	How the curriculum keeps our children safe	Resources
Neglect	<ul style="list-style-type: none"> ● Annual NSPCC assemblies/workshops which make children aware of how children should be treated and what neglect is (KSI/KS2). Workshops for KS2. ● Children are taught about British Values. Children know that rules keep British Citizens safe. Children know who they can talk to if they might be experiencing this type of abuse. ● SAS Crew (Children's safeguarding board) lead annual workshops in EYFS and KSI - Privates are Private - PANTS programme. ● Share aware week - led by SAS crew in assembly ● Access to SAS crew at dinner-time 	<ul style="list-style-type: none"> ● Story books ● SAS Crew ● RSHE/Jigsaw
Physical Abuse	<ul style="list-style-type: none"> ● Annual NSPCC assemblies/workshops which make children aware of how children should be treated and what physical abuse is (KSI/KS2). Workshops for KS2. ● Children are taught about British Values. Children know that rules keep British Citizens safe. Children know who they can talk to if they might be experiencing this type of abuse. ● Assemblies to promote positive relationships including what bullying behaviour looks like 	<ul style="list-style-type: none"> ● Story books ● SAS Crew ● RSHE/Jigsaw ● Child friendly policies ●

	<ul style="list-style-type: none"> • Annual Y6 Crucial Crew Event. • Annual STAR for Y6 - Led by P.C. • Operation encompass: Expect respect • Share aware week • Access to SAS crew at dinner-time • PANTS workshops led by SAS Crew. • Child-on-Child abuse workshops led by SAS Crew • Child friendly child-on-child abuse policy • Child friendly safeguarding policy. 	
Sexual Abuse	<ul style="list-style-type: none"> • Annual NSPCC assemblies/workshops which make children aware of how children should be treated and what abuse is (KSI/KS2). Workshops for KS2. • Children are taught about British Values. Children know that rules keep British Citizens safe. Children know who they can talk to if they might be experiencing this type of abuse. • SAS crew teach underwear rule - PANTS to EYFS and KSI. • Access to SAS crew at dinner-time • SAS crew deliver workshops to KS2 - Child-on-Child abuse. • Loudmouth - theatre group to support children in year 4, 5 and 6 - bullying issues and cyber-bullying. 	<ul style="list-style-type: none"> • Story books • SAS Crew • RSHE/Jigsaw
Emotional Abuse	<ul style="list-style-type: none"> • Annual NSPCC assemblies/workshops which make children aware of how children should be treated and what Emotional Abuse is (KSI/KS2). Workshops for KS2. • Children are taught about British Values. Children know that rules keep British Citizens safe. Children know who they can talk to if they might be experiencing this type of abuse. • Operation encompass 	<ul style="list-style-type: none"> • Story books • SAS Crew • RSHE/Jigsaw

	<ul style="list-style-type: none"> ● Access to SAS crew at dinner-time ● Life learning curriculum - PSHE/RSHE 	
Children missing in education/Child missing from home or care	<ul style="list-style-type: none"> ● PSHE: Jigsaw - through being me in my world and dreams and goals topics - belonging, rules, I am great, making choices, staying safe, being responsible, responsibilities home and school, conflict, and resolution, taking a risk, decisions and consequences, different families. ● British values: Rule of the Law and Individual Liberty, rights of a child, universal declaration of human rights ● RE: All about me ● Reading for Pleasure - texts to share - Way home, 	<ul style="list-style-type: none"> ● Playground pals ● SAS Crew ● NSPCC ● Jigsaw ● Respect yourself ● Childline ● RSHE Policy ● RE policy ● British values overview
Mental Health including trauma, attachment and bereavement	<ul style="list-style-type: none"> ● PSHE: Jigsaw through being me in my world, celebrating differences, relationships and healthy me topics. ● British values: Respect, tolerance, and individual liberty ● PE ● Use of outdoor environment to promote health and well-being. ● Residentials - Arthog ● Mental well-being leads ● Pupil Voice - Termly ● Worry box in each class and corridor. ● 2 members of SLT have received Mental Health First aid - SA and EW ● Mental health action plan 	<ul style="list-style-type: none"> ● Child protection policy ● Emotional wellbeing policy ● Behaviour policy ● Online safety policy ● Jigsaw ● British values overview ● Mental health week ● Career week ● Teagues Bridge Citizen of the week ● School parliament ● Playground Pals

	<ul style="list-style-type: none"> • Rainbow room used for learning mentor to talk to children. • Reading for Pleasure – Texts: when sadness came to call, badgers parting gifts, always and forever. • Headteacher has completed the mental health leader’s course. • Well-being champions support other children in school and lead assemblies. 	<ul style="list-style-type: none"> • Mental health policy
<p>Bullying (Cyberbullying/Prejudice bullying)</p>	<ul style="list-style-type: none"> • The school prioritises cultivating a safe and respectful environment with zero-tolerance of bullying of any kind. • Teach children the e-safety rules – Do’s and Don’ts. • Computing lessons address e-safety and cyberbullying. • Annual internet safety days • All children are aware of the bullying incident forms, that they can complete and hand to Mrs Abdulla. They can also request SAS crew help them complete the form. • Share aware week – E-safety. • Jigsaw themes • British values: Respect for others and tolerance of different faiths and cultures • Values assembly linked to friendship • Anti-bullying week – Friendship week • Assemblies/discussions/circle time related to bullying • Annual production – Linked to cyberbullying • Visits from Richard Smith around E-safety and cyberbullying. • Parents workshop linked to E-safety and cyberbullying • Assemblies linked to keeping safe and preventing children from experiencing cyberbullying. • All children have access to ‘I am being bullied form’, these are displayed in every classroom and in the main hall. 	<ul style="list-style-type: none"> • Child Protection Policy • Behaviour policy • Online safety policy • RSHE Policy • Jigsaw • British values days • Education for a connected world • Net aware • School Parliament • Playground Pals • SAS Crew

	<ul style="list-style-type: none"> ● Twice a year children are asked to discuss this area for the SMSC pupil voice questionnaire and annual bullying survey ● Annual E-safety week ● E-safety posters displayed in all classrooms ● E-safety team of children - Year 4, 5 and 6. ● Playground Pals support children with any concerns around bullying ● Reading for Pleasure time - a range of books are provided which deal with the theme of friendship e.g., Cyril and Pat, Charlotte's Web, Harry and the Bucket Full of Dinosaurs go the school, Ugly Duckling, Rainbow Fish, Ruby's worries, Lost and Found, I want a Friend, Sharing a Shell, Colour Monster, Smartest Giant in Town. ● RE - Caring for others and celebrating diversity ● Themed days - to encourage a sense of belonging. ● Pupil voice: Children complete regular pupil voice activities to ensure they are heard regarding bullying issues of any kind. 	
Racial Abuse	<ul style="list-style-type: none"> ● Addressed through British Values/Value of the month assemblies e.g. mutual respect and tolerance of different cultures. ● Children are taught about the importance of respecting all differences and treating everyone equally - Annual KS2 workshops 'I am me' organised and led by SAS Crew (Children's safeguarding board). ● British values week ● Children are taught to appreciate the range of national, regional, religious and ethnic identities through the Global teaching programme. ● Library has a range of books covering a range of ethnicities, cultures and religions. ● Every class have books which cover a range of ethnicities. ● Festival of the month - teaches children about different values and customs 	<ul style="list-style-type: none"> ● British Values ● SAs Crew ● Racist incident reporting forms ● IRIS ● Persona Dolls ● Child protection policy ● Behaviour policy ● RSHE policy ● Online safety policy ● Cultural diversity map ● Cultural capital overview

	<p>around the world.</p> <ul style="list-style-type: none"> • Year 4 cover segregation in their USA theme. • All children are aware of the racist incident folder in Mrs Abdulla's office. • Twice year children are asked to discuss this area for the SMSC pupil voice questionnaire. • Annual black history month - assembly, workshops and visitors from MDS. • Annual Asian celebration month - assembly, workshops and visits from MDS - Children take part in Asian sports - Kabala. • Whole school cultural diversity map - outlines cultural diversity through all curriculum subjects across the school and across they year. • Whole school theme Autumn 1 - Me and my diverse world. 	
<p>Discrimination (all 9 Characteristics)</p>	<ul style="list-style-type: none"> • Addressed through British Values/Value of the month assemblies e.g. mutual respect/respecting differences: Respect for others and tolerance of different faiths and cultures • Children are taught about the importance of respecting all differences and treating everyone equally • In the Relationships curriculum (RSE), high quality texts are used to celebrate diversity. • British values week. • Twice a year children are asked to discuss this area for the SMSC pupil voice questionnaire. • Children have access to the bullying forms in every classroom and in the main hall. • Jigsaw - Celebrating differences and relationships • Reading for Pleasure texts - a range of books are provided which deal with the theme of discrimination: Journey to Jo'burg, Bill's new Frock, the same but different too, the Day the Crayons Quit, Giraffes Can's Dance, Tango and Me. 	<ul style="list-style-type: none"> • Child protection policy • Behaviour policy • RSHE policy • Online safety policy • British values days • Playground pals • SAS Crew • NSPCC • Story books linked to 9 protected characteristics

	<ul style="list-style-type: none"> ● RE: Learning about other religions and comparing them to each other, celebrating diversity and caring for others. ● History/RE/PSHE: Learning about significant individuals who have suffered discrimination, through assemblies and SMSC work - Nelson Mandela, Martin Luther King, Rosa Parks, Michael Jordan etc. ● Whole school theme - Autumn 1 - Me and my diverse world. 	
Homophobic Abuse	<ul style="list-style-type: none"> ● Children are taught in KS2 about both homophobic and transphobic bullying through high quality texts. They know that it is wrong and it is just as serious as other types of bullying. ● All children have access to the bullying forms in every classroom and the main hall. ● Use stonewall resources ● All staff have received CPD using the Stonewall resources. ● British values week ● Twice a year, children from KS2 are asked to discuss this area for the SMSC pupil voice questionnaire. ● Reading for pleasure - texts are shared that cover these issues. ● Year 5 and 6, RSE sessions address sexual orientation and transgender. High quality texts are used as a tool to teach this subject sensitively and challenges such stereotypes. ● KS2 are taught about homophobic and transphobic bullying. This is addressed through the SAS Crew child-on-child abuse workshops and assemblies. ● 	<ul style="list-style-type: none"> ● Child protection policy ● Behaviour policy ● RSHE policy ● Online safety policy ● British values days ● Playground pals ● SAS Crew ● NSPCC
Gender based violence	<ul style="list-style-type: none"> ● From Year 3 onwards, Relationships (RSE) sessions cover challenging stereotypes. ● Use of Jigsaw (PSHE) materials ● Children are taught about mutual respect especially within both genders. ● Operation encompass 	<ul style="list-style-type: none"> ● Child protection policy ● Behaviour policy ● RSHE policy ● Online safety policy

	<ul style="list-style-type: none"> • Reading for Pleasure - And Tango makes three, Mommy, Mama and Me, Introducing Teddy, Worm loves Worm, Jacob's New Dress, Be who you are, My Princess Boy, 	<ul style="list-style-type: none"> • British values days • Playground pals • SAS Crew • NSPCC
Radicalisation/Extremist behaviour	<ul style="list-style-type: none"> • Addressed through assemblies/circle time - London Bridge attacks, Manchester Concert bombs etc. Community Issues or global issues. • Jigsaw - Celebrating differences, relationships and healthy me topics. • Annual visit from Kon-flux theatre linked to British values: Mutual respect and extremist views - KS2 • Children are encouraged to share their beliefs but they know that some people have extreme beliefs which are not right and can result in illegal behaviour. • Twice a year, a sample of KS2 children are asked to discuss this area for the SMSC pupil voice questionnaire. • Use Newsround daily in KS2 followed by Friday Classroom solution quiz. • Use of Picture News to explore topical events linked to SMSC and British Values - Assembly • British values week - Respect for others, tolerance of different faiths and cultures, rule of the law and democracy. • RE/History - Groups we belong to, right and wrong, similarities and differences of people and groups. 	<ul style="list-style-type: none"> • Child protection policy • Behaviour policy • RSHE policy • Online safety policy • British values days • Playground pals • SAS Crew • NSPCC • Prevent policy. • British values overview
Child sexual exploitation Child Criminal Exploitation	<ul style="list-style-type: none"> • All parents have received an information guide about child exploitation. • Through discussion about the refugee/migrant crisis, upper KS2 have been informed about child trafficking and that child refugees are highly vulnerable. • All children take part in a 'Keeping ourselves Safe' lessons which address, in a sensitive way, grooming, E-safety, PANTS and what to do if they are worried about their own safety. The word 'Grooming' will not be mentioned directly, but 	<ul style="list-style-type: none"> • Child protection policy • Behaviour policy • RSHE policy • Online safety policy • British values days

	<p>addressed through educating children on the signs e.g. not accepting gifts from strangers etc.</p> <ul style="list-style-type: none"> ● Refugee week ● Jigsaw ● British values - respect for ourselves and one another, Rule of the Law rights and responsibilities, making choices for ourselves. ● Science - Living things studying the human life cycle ● Computing through online safety: Grooming, conversations around keeping safe when online, self-confidence and impact on mental health ● Reading for Pleasure - Texts to explore these issues: Where did I come from? The truth about babies, it's so amazing, Mummy laid an egg, Tadpole's Promise ● Loud Mouth theatre - KS2. ● Snap trap - Year 5 and 6 	<ul style="list-style-type: none"> ● Playground pals ● SAS Crew ● NSPCC ● Jigsaw ● Respect yourself ● Childline
<p>Child-on-Child abuse/Sexual Violence and Sexual Harassment Upskirting</p>	<ul style="list-style-type: none"> ● Jigsaw through being me in my world, celebrating differences, relationships and healthy me topics. ● RSHE: Respect yourself through personal space, good and bad touch. ● British Values: Rule of the Law, Respect and Individual Liberty, rights of a child. ● SAS crew deliver workshops to KS2 ● SAS Crew deliver whole school assembly - Speak up ● Whole school assembly - RESPECT ● Child friendly policy 	<ul style="list-style-type: none"> ● Playground pals ● SAS Crew ● NSPCC ● Jigsaw ● Respect yourself ● Childline ● RSHE Policy ● RE policy ● British values overview ● Child Protection Policy

		<ul style="list-style-type: none"> • Peer-on-peer abuse policy • Childline
Trafficking	<ul style="list-style-type: none"> • Jigsaw - Being in my world and Relationships. Groups I belong to, responsibilities in the community, conflict and resolution, freedom and human rights. • British values: respect for others, tolerance of different faiths and cultures, Rule of the Law, and democracy. • RE/History - groups we belong to, right and wrong, similarities and differences of people/groups. • Respect yourself/RSHE - Growing and changing, safety, decision making, relationships. 	<ul style="list-style-type: none"> • Online safety policy • British values days • Playground pals • SAS Crew • NSPCC • Jigsaw • Respect yourself • Childline • RSHE policy
SEXTING and Upskirting	<ul style="list-style-type: none"> • Annual production linked to sexting - Year 4, 5 and 6 • E-safety curriculum covers SEXTING. What is sexting? What are the dangers? Where can you find advice on sexting? • Y5/6 NSPCC workshops address sexting and inappropriate messages. • Share aware week (Sexting). • British values: Respect for Ourselves and one another. • Year 5 and 6 - Snaptrap - theatre group to focus on the use of Whatsapp, sexting and online bullying and nude images • Loud Mouth • PANTS workshops delivered by SAS crew - EYFS/KSI. • SAS crew deliver child-on-child abuse workshops which covers sexting and upskirting. • 	<ul style="list-style-type: none"> • Online safety policy • British values days • Playground pals • SAS Crew • NSPCC • Jigsaw • Respect yourself • Childline •
Substance Misuse	<ul style="list-style-type: none"> • Year 6 STAR programme and Crucial Crew annual event. • RSHE 	<ul style="list-style-type: none"> • Online safety policy • British values days

	<ul style="list-style-type: none"> • British values: Respect for ourselves • Crucial Crew - Year 6 • Whole school theme - Healthy lifestyles. • The impact of smoking - year 5 and 6. 	<ul style="list-style-type: none"> • Playground pals • SAS Crew • NSPCC • Jigsaw • Respect yourself • Childline • RSHE policy • Crucial Crew
Domestic Violence	<ul style="list-style-type: none"> • Annual NSPCC workshops/assemblies which make children aware of domestic violence. • Operation Encompass - Expect Respect Programme delivered in year groups 2-6. • Jigsaw • RSHE - Healthy Relationships • British Values: Rule of the Law, Respect and Individual Liberty, Rights of a child, Universal declaration of human rights. • Reading for Pleasure texts - The runner 	<ul style="list-style-type: none"> • Online safety policy • British values days • Playground pals • SAS Crew • NSPCC • Jigsaw • Respect yourself • Childline • RSHE Policy
Gang opportunity/youth violence (Initiation/hazing type violence and rituals)	<ul style="list-style-type: none"> • SAS crew deliver child-on-child abuse workshops to KS2. • Year 6 Crucial crew • British values week • Visits from the local CSO's 	<ul style="list-style-type: none"> • Child-on-child abuse child friendly policy.
Female Genital mutilation	<ul style="list-style-type: none"> • This is not addressed with the children; however, staff have received up-to-date documentation and have been informed of this type of abuse at the termly safeguarding meeting for all stakeholders. • All staff receive annual child protection/safeguarding training and this is covered in the training. 	<ul style="list-style-type: none"> • Online safety policy • British values days • Playground pals • SAS Crew • NSPCC

	<ul style="list-style-type: none"> • All staff are reminded of this at termly safeguarding updates. • RSHE/PSHE - Jigsaw - Being me in my world, Relationships, Healthy me. • British Values: Respect for ourselves and one another 	<ul style="list-style-type: none"> • Jigsaw • Respect yourself • Childline • FGM policy • RSHE policy <p>Check age appropriateness of all resources when planning for FGM Nationalfgmcentre.org.uk/fgm/fgm/resources</p> <p>www.gov.uk/government/publications/female-genital-mutilation-resource www.amnesty.org.uk/blogs/classroom-community</p>
Forced Marriages	<ul style="list-style-type: none"> • British Values: Respect for ourselves and one another. • RSHE: Respect yourself through personal space, touch, puberty, growing and changing. • RE: Learning about marriage/commitment 	<ul style="list-style-type: none"> • Online safety policy • British values days • Playground pals • SAS Crew • NSPCC • Jigsaw • Respect yourself • Childline • RSHE Policy • RE policy • British values overview • Right to choose - www.gov.uk/guidance/forcedmarri

		age
Fabricated or induced illness	<ul style="list-style-type: none"> ● Jigsaw - Healthy me topic ● Science - Animals and Humans ● Other: Individual health plans for relevant pupils 	<ul style="list-style-type: none"> ● Playground pals ● SAS Crew ● NSPCC ● Jigsaw ● Respect yourself ● Childline ● RSHE Policy ● British values overview ● School Parliament ● Online safety policy
Unhealthy relationships (parent conflict, intimate partner abuse)	<ul style="list-style-type: none"> ● Children are educated on healthy, non-violent relationships through the Jigsaw programme and RSHE programme. ● EYFS/KSI - role - looking after babies, family etc. ● Persona dolls are used to explore any unhealthy relationships through the doll's persona. ● Value of the month - respect ● Annual NSPCC assemblies and workshops. ● Regular assemblies to promote healthy relationships. ● Share aware week. ● British values week 	<ul style="list-style-type: none"> ● SMSC/British values audit ● SMSC/British values floor book in each base. ● Value of the month newsletters
Homelessness	<ul style="list-style-type: none"> ● Staff have received up to date documentation about this type of abuse so that 	<ul style="list-style-type: none"> ●

	they would be able to identify the signs if a child experiences it and are clear about how to report it. The school supports charities such as the local food bank	
Honour based violence	<ul style="list-style-type: none"> • Jigsaw - through being me in my world, relationships and healthy me. • British Values: Respect for ourselves and one another. • RE: Learning about religion, faith and belief 	<ul style="list-style-type: none"> • Online safety policy • British values days • Playground pals • SAS Crew • NSPCC • Jigsaw • Respect yourself • Childline • RSHE Policy • RE policy • British values overview
County Lines/Drugs	<ul style="list-style-type: none"> • Jigsaw • Science - Animals including humans, studying the human body and effects of substance abuse. • Computing - Online Safety: Grooming, conversations around keeping safe when online, self-confidence and impact on mental health. • British values: Rule of the Law, Respect and Individual Liberty, rights of a child. • STAR - year 6 • Crucial Crew - Year 6 	<ul style="list-style-type: none"> • Playground pals • SAS Crew • NSPCC • Jigsaw • Respect yourself

		<ul style="list-style-type: none"> • Childline • RSHE Policy • British values overview • STAR - West Mercia Police • Crucial Crew • School Parliament
Poor parenting	<ul style="list-style-type: none"> • EYFS/KSI role play - home corner, looking after babies/dolls • Value of the month - caring - children are taught the importance of caring for each other. • Annual NSPCC assembly • Addressed through Y5 relationships lessons • Y5/6 look at the rights of the child through their Victorian crime and punishment theme. • British values week • Family learning 	<ul style="list-style-type: none"> •
Safety	<ul style="list-style-type: none"> • PSHE: Jigsaw through being me in my world, celebrating differences, relationships and healthy me topics. • British Values: Rule of the Law, Democracy, and Individual Liberty, understanding of human rights. • Computing through online safety. • Assemblies: road safety awareness, awareness of road signs and speed limits, role of the pedestrian, recognise independence brings responsibility. Strategies for keeping physically and emotionally safe (Rail, water, Fire Safety). Safe holiday assemblies. Stranger Danger assemblies. • Parent online safety assemblies - Richard Smith 	<ul style="list-style-type: none"> • School parliament • Online safety newsletter for parents • Junior road safety officers • SAS crew • Playground pals • SAS Crew • NSPCC

	<ul style="list-style-type: none"> • Online safety monthly newsletter for parents • PANTS campaign - EYFS/KSI • Child-on-child abuse workshops - KS2 • Loudmouth and Snaptrap - Online safety/cyber-bullying. • Geography/PE/Science: Water safety, swimming, extreme earth, fire safety, safety when conducting experiments. • D&T: Children learn about hygiene and safety through cookery, using tools and equipment safely. • Bikeability: Year 5 and 6 cycle training to promote safety on the roads. • Pedestrian training: EYFS, KSI and Y3 and 4 have pedestrian training to promote safety when out and about. • Schools' visits: Police, fire service, Nurses. • Pupil Voice: Children complete pupil voice termly. • Year 6 take part in Crucial Crew annually. • Loud mouth and Snap trap 	<ul style="list-style-type: none"> • Jigsaw • Respect yourself • Childline • RSHE Policy • RE policy • British values overview • Child protection policy • Online safety policy • Jigsaw • British values overview • RSHE policy • STAR • Crucial Crew
--	---	---

Online Safety - What does the curriculum offer?

Area	What does the curriculum offer?	Resources
Content ~ How we protect children against illegal, inappropriate content.	<ul style="list-style-type: none"> • Jigsaw - covers internet safety. • Internet safety days. • Internet safety assemblies led by SAS Crew. • RSHE curriculum • Loudmouth workshops for KS2 	www.segfl.org.uk/digitalliteracy E-safety overview A and B cycle.

	<ul style="list-style-type: none"> • Snap trap assemblies and workshops for year 4, 5 and 6. • E-safety curriculum overview. • Use of the digital literacy and citizenship • Newsletters and updates for parents on setting controls on their devices ~ communicated through the Friday newsletter and accessible on the school website. • Think U Know ~ internet safety advice for those aged 5-16 ~ for parents and teachers (produced by CEOP ~ Child exploitation and online protection). 	
<p>Contact ~ How we protect children from being subjected to harmful interaction with others.</p>	<ul style="list-style-type: none"> • Regular safeguarding assemblies/Speak up assemblies. • SAS crew have produced a child friendly safeguarding policy. • RSHE/Jigsaw curriculum. • Online safety workshops • Snap trap workshops for year 4, 5 and 6. • Loudmouth ~ online safety assembly and workshops ~ year 5 and 6. • NSPCC workshops annually ~ Whole school • Bullying forms in every classroom • SAS crew on duty every dinner-time • PSHE (Jigsaw curriculum) • Themed days for whole school every half term, focusing on safety aspects of computing. • Children are aware of Kidscape ~ an organisation which helps to prevent bullying for children, parents and teachers, 	<p>Online safety Overview Cycle A and B</p>

	<p>www.kidscape.org.uk/</p> <ul style="list-style-type: none"> • Children are aware of Childline, a free helpline for young people. • NSPCC resources - Share aware 	
<p>Conduct - How we teach our children about behaviours online, what is appropriate and what is not.</p>	<ul style="list-style-type: none"> • Regular safeguarding assemblies/Speak up assemblies. • SAS crew have produced a child friendly safeguarding policy. • RSHE/Jigsaw curriculum. • Online safety workshops • Snap trap workshops for year 4, 5 and 6. • Loudmouth - online safety assembly and workshops - year 5 and 6. • NSPCC workshops annually - Whole school • Safer internet weeks and days throughout the year • Workshop - what is a friend online? Is this a friend? • Keeping personal information private - lessons for KS2 • Remind children about reporting online incidents to their parents and to school. Complete the bullying form for cyberbullying and the 'anonymous whisper line. 	<p>Assemblies Resources from Snap trap workshops Conference room display of posters to support online safety</p>
<p>Commerce - How we reduce the children's risk of gambling, online advertisements, and Scams.</p>	<ul style="list-style-type: none"> • Cyber-security lessons • Jigsaw curriculum covers safety online. • Themed days each half term • Information on the school website for parents 	<p>E-safety overview for whole school cycle A and B</p>



Safeguarding Culture Checklist September 2025-2026

Area of safeguarding	What should be in place?	RAG rating	Actions/Next steps
Record Keeping	<ul style="list-style-type: none"> • Teachers, Teaching assistants and office staff all have received CPOMS training and have access to their base. • CPOMS incidents all alert the DSL. • Concern form dated and signed with actions included for dinner-time staff, cleaners and caretaker. • Overview of all concerns and monitoring and actions to be included. • Record of children witnessed Domestic Abuse. • Records locked away • Referral to FC should be no later than one day after the concern raised. • Friday briefing - share any safeguarding concerns that we all need to be aware of, linked to contextual safeguarding. • DSL's inform anyone raising a concern that is being addressed and monitored, actions are added to CPOMS and alerted to the adult that raised the concern. • Wishes and feelings are carried out with children when a concern 	<p style="font-size: 2em; margin: 0;">G</p>	<ul style="list-style-type: none"> • Ensure that all DSL's follow-up wishes and feelings with children, setting a calendar alert for 2-week intervals. • To include DA on pupil outcome grids and report to governors.

	<p>have been raised.</p> <ul style="list-style-type: none"> • ALL staff receive training on record keeping as part of the termly safeguarding update. • DSL's monitor the CPOMS entry regularly and then provide feedback and training where applicable. • DSL's refer to the Threshold document when following up a concern. DSL's record all discussions and decisions made and the reasons for these decisions. • Supervision takes place with all DSL's and a record of actions are kept and shared with DSL. • Communication from other agencies is added to CPOMS. • CPD for DSL's ~ record is kept. • Registers from safeguarding training are kept showing attendance. • Records for signing on policies have been received. 		
Single Central Record	<ul style="list-style-type: none"> • Records and checks carried out are included in personal files. • Applications forms and interview notes are stored in Personal files. • Personal files are locked away securely. • Administrator staff have received recent training from the 		To ensure all staff have a current DBS.

	<p>HR department.</p> <ul style="list-style-type: none"> • Head and business manager have received safer recruitment training. • Online checks are carried out once candidates have been shortlisted. This is record on the SCR. • Governors regularly check the SCR - monthly or half termly (this depends on the need). • Business manager has received up-to-date training on the SCR. • SCR is stored electronically. • Governor has received training on SCR. • Adverts and interview responses are kept in personal files 		
Timely referrals	<ul style="list-style-type: none"> • Referrals are completed once a concern is identified. • Actions are completed on CPOMS and relevant person alerted. • Ensure that all referrals are documented, with date referral was sent, what was the general concern and when a response is received. • Referrals indicate the role of the person completing them. • School has a referral to agencies log. • Schools challenge other agencies to ensure the safety of children, 		<ul style="list-style-type: none"> • Ensure that referrals are alerted to all DSL's when concerns are followed up and actions required. • SA to design a form to capture when concerns are escalated.

	<p>this is documented on CPOMS e.g. We have challenged our partner agency... in this way... on this date. this was the outcome...</p> <ul style="list-style-type: none"> • Agency checks should be carried out in 1-3 hours of the referral. This also applies to DSL's following up concerns logged on CPOMS. • Input from agency log. 		
Safer recruitment	<ul style="list-style-type: none"> • Safer recruitment policy in place reflects the KCSIE Sept 2025. • At least one member on an interview panel have received safer recruitment training. • Business manager has completed safer recruitment training. • Safer recruitment overview for appointments/vacancies. • Safeguarding checks are carried out when staff are appointed. • Pre-employment checks are carried out. • 2 references from most recent employers are requested. • DBS in place prior to starting. • Disqualification by association carried out. • Online safety checks are carried out once candidates have been shortlisted, this is carried out by the business manager. 		<ul style="list-style-type: none"> • To arrange for safer recruitment training for all governors and Senior leaders.

	<ul style="list-style-type: none"> • Business manager checks the employment history prior to interviews. • Governors carry out a safer recruitment audit annually 		
Attendance	<ul style="list-style-type: none"> • Attendance of vulnerable groups are checked every two weeks. • Attendance for all groups across school are checked every month- SEND, PPG, EAL, girls, boys. And each year group. • Attendance is communicated with SLT and then with class teachers. • Headteacher and SENDCO meet with the EWO monthly. • Attendance is tracked every 2 weeks to look for improvements in attendance and lateness. • Letters are sent home by the EWO and then recorded on the tracker. • Attendance panel meeting are held to support families with attendance and lateness. • Children are encouraged to be on time - punctual panda. Each child received a punctual panda token and this is drawn out on a Friday for punctual panda award. • Children are encouraged to attend school - half-termly attendance award given to best class attendance and rewarded 		<ul style="list-style-type: none"> • Ensure that attendance of groups is shared with SLT. • Ensure year group attendance is communicated with all teachers. • Ensure that teachers are aware of attendance difficulties for the children in their class so they can offer support and check on these children in class.

	<p>with a non-uniform day, weekly class attendance, each class chooses the best attender, and they are awarded with a special badge and certificate. Each week the best class attendance is awarded with the attendance trophy from each keystone.</p> <ul style="list-style-type: none"> • Parents are telephoned immediately when a child is absent. • Registers are taken in a timely manner, so that children absence can be followed up immediately. Register opens at 8.50 and closes at 9.00. Afternoon session KSI 1.00-1.10 and KS2 1,30-1.40. • 		
Policies	<ul style="list-style-type: none"> • Safeguarding policies on the website are up to date and current. • Staff attend termly safeguarding updates. • Script and prompts for writing up a CPOMS entry are available for all staff. • Script and prompts for making a referral to family connect. • All staff have received the child protection policy and KCSIE. • Parents are aware of the safeguarding procedures in school. • SAS crew produce child friendly 		<ul style="list-style-type: none"> • Implement half termly Safeguarding newsletter, highlighting local safeguarding concerns.

safeguarding leaflets for all children and families.

- Safeguarding action plan is written each year.
- Safeguarding is a priority on the school improvement plan.
- SAS crew have an action plan.
- LA Section 157 is completed annually and sent to the LA.
- Child protection training is in place annually which all staff must attend.
- DSL refresher course every 2 years.
- DSL's attend termly updates with the LA.
- DSL to produce a termly safeguarding newsletter for all staff.
- Induction folder for new staff - include all safeguarding policies and procedures.
- Staff handbook includes a section on safeguarding.
- Mobile phone policy is communicated with all staff and included in the staff handbook.
- ALL staff are informed about the correct procedures when using social media.
- Safeguarding is an item agenda on Friday's briefing.
- Child friendly policies for

	<p>safeguarding and child-on-child abuse.</p> <ul style="list-style-type: none"> • All safeguarding policies are up to date. 		
Risk assessments	<ul style="list-style-type: none"> • Leaders check risk assessments and sign these prior to a visit taking place - RA go to MH and then to SA for signing. • MH and SA have received Risk assessment training. • Governors check risk assessment termly at the general-purpose committee meetings. • Risk assessments are completed with actions following an educational visit. • A first aider is present on all educational visits. • A DSL is present on visits outside of the authority. • Risk assessments are in place for children with specific needs. These are completed by the SENDCO. 		
Communication	<ul style="list-style-type: none"> • All children know who the DSL's in school are. Posters are displayed in all classrooms. • All children have a safeguarding card. • SAS crew are available every dinner time to support children. They are situated outside and have a sign, so children know who and where they are. 		<ul style="list-style-type: none"> • Produce a termly safeguarding newsletter for all staff. • Produce a monthly newsletter for safeguarding issues in the local area and on-line safety concerns.

- SAS crew are the children's safeguarding board - there are posters of them in each classroom.
- SAS crew deliver termly safeguarding assemblies.
- SAS crew deliver the PANTs campaign in KS1 and child-on-child abuse workshops in KS2.
- Stranger Danger assemblies are held every term and followed up in class.
- All staff have a DSL card with prompts when faced with a concern or a disclosure.
- Pupil voice takes place twice a year for both children and parents.
- All children know about challenging visitors around school.
- All visitors must read the safeguarding procedures.
- All visitors must wear the safeguarding script when walking around school unaided.
- Concerns form are displayed in the staff room for visitors to complete.
- Children concern forms are displayed on the safeguarding board.
- Bullying forms are accessible in every classroom.
- DSL posters are displayed around

	<p>school and in all classrooms.</p> <ul style="list-style-type: none"> • First aid posters are displayed around school. • All staff have received first aid 3-day training. • SAS crew have produced a child friendly safeguarding policy for all children. • SAS crew have produced a child friendly policy for child-on-child abuse. 		
<p>Information sharing</p>	<ul style="list-style-type: none"> • Any CPOMS/concern form that displays a risk of harm must be followed through with family connect. • Communication form with FC to be completed by the referrer. • Referral script/prompt sheet to be used when writing a referral or a concern form. • Referrals forms are completed within one day of the phone call. • Information from outside agencies is communicated with DSL via CPOMS. • DSL's meet every two weeks to share cases and actions, this is chaired by the Supervisor. • All DSL's receive alerts from CPOMS, they communicate with each other to who will follow this up. • Wishes and feelings questions are completed and added to CPOMS, 		

	<p>ensuring all DSL's have a full overview of all cases.</p> <ul style="list-style-type: none"> • Monthly online safety newsletters are sent to parents on the Friday newsletter. • Any handwritten notes are scanned into CPOMS and then shredded as outlined in the data protection policy. 		
CPD/Training	<ul style="list-style-type: none"> • Termly safeguarding updates for all staff. • DSL's attend termly safeguarding update led by the LA (Scot Thomas-White). • Annual online safety updates - Richard Smith. • Prevent training - all staff. • Annual safeguarding and child protection training for all staff. • CSE training • County lines training for all staff and parents. • All DSL's have attended DSL refresher training every two years. • SA attends future in minds, CPD linked to safeguarding. 		<ul style="list-style-type: none"> •
Governors	<ul style="list-style-type: none"> • Governors attend termly safeguarding updates. • Local safeguarding risks are communicated with governors. • All governors have received county 		<ul style="list-style-type: none"> • Ensure all governors attend termly safeguarding updates. • Set dates for DSL governors to attend school and meet with DSL's each term.

	<p>lines training.</p> <ul style="list-style-type: none"> • Governors DSL attend school for updates with the DSL each term. Safeguarding logs on CPOMS are checked and follow up procedures and referrals. • Governors hold DSL's to account by challenging their actions and the impact of the referrals. • Heads report includes Safeguarding updates and local challenges that might put children at risk. • Governors online safety training annually. • Governors carry out annual online safety audit along with the Computing lead. • Governors receive a termly safeguarding overview. • Governors attend the CSE training. 		<ul style="list-style-type: none"> • Ensure that DSL governors come into school and work with DSLs to complete the annual safeguarding audit.
Monitoring	<ul style="list-style-type: none"> • Pupil Voice twice a year. • Parent voice twice a year. • Staff questionnaires twice a term. • CPOMS entries are monitored each half term. • DSL's meet monthly to review safeguarding concerns. • Supervision takes place monthly between the supervisor and the individual DSL's. 		<ul style="list-style-type: none"> •

	<ul style="list-style-type: none"> • SAS Crew regularly seek the views of the children as to where they feel safe in school and where they don't feel safe at school and outside of school. • Behaviour logs and bumped head records are monitored to assess certain areas of the playground for ongoing issues. • SENSO (computer system) is linked to CPOMS, and concerns can be identified from online activity which is flagged up via SENSO and this can then be transferred to a CPOMS entry. • Online activities are monitored through the ICT reporting system, SENSO. Risk assessments must then be written as a result of inappropriate activity. 		
School safety	<ul style="list-style-type: none"> • Supervision at break-time and dinner-time is in line with school policy. • There is a first aider on duty every break-time and dinner-time. All incidents are recorded and communicated with the teachers. Head bumps are recorded, and the office informed. • Children are supervised in the dinner hall. • The correct number of adults 1:6 or 1:4 for more challenging classes when on educational visits. All SEND children have 1:1 support. • The school site is always secure, 		

	<p>and children do not leave the inside of the building until all gates are locked.</p> <ul style="list-style-type: none"> • Registers are completed by 9.00 and 1.00 (KS1) and 1.40 (KS2). • Fire procedures are displayed in all classrooms, and we have termly evacuation practices. • Lockdown procedures are displayed in all classrooms, and we have 2 practices each year. • Health and safety checks are carried out weekly by the business manager, classrooms are checked, and all staff have health and safety books. • Governors carry out health and safety audits every term with the business manager. 		
Pupil safety	<ul style="list-style-type: none"> • All pupils are expected to be in school and parents are contacted when children are not at school. • Stranger Danger assemblies every term. • DSL assemblies every term - PANTS campaign, Keeping safe, Child-on-Child abuse workshops, water safety. • Road safety assemblies and training for all children. • All children wear school jumper with a logo. • Children are given first aid slips and a bumped head wrist band. All parents are informed of any 		

first aid incidents. All parents are telephoned when there is a head bump.

- Emergency inhalers and EpiPen's are available in school.
- Care plans are in place for children with medical conditions.
- Risk assessments are in place for children with Asthma and Allergies.
- PEP is in place for SEND children and children with medical conditions.
- Year 6 children receive cycling training.
- Year 3 and 4 receive pedestrian training.
- ALL children in KS2 go swimming during the summer term, we have a level 2 qualified swimming teacher.
- SAS crew are the children's safeguarding board, they are available daily and wear bright red tabards, so all children know who they are. They support children with any safeguarding or bullying issues.
- Annual visit from NSPCC
- Annual visit from CSO's
- STAR for year 6
- Crucial crew for year 6.
- Snap trap - online safety - year

	<p>4, 5 and 6.</p> <ul style="list-style-type: none"> • Loud mouth ~ Bullying and Cyber bullying ~ year 5 and 6. 		
<p>On-line safety</p>	<ul style="list-style-type: none"> • Termly safeguarding update linked to on-line safety, led by Richard Smith. • Safety internet days ~ themed day for the whole school. • On-line safety assemblies for all children each term. • Online safety built into computing curriculum and RSHE curriculum. • SENSO tool to monitor incidents on the computers. • On-line safety posters displayed in classrooms. • On-line safety team monitor activities on the i-pads. • On-line safety meetings for parents ~ annually • Governors carry out online safety audit each year. • SENSO reports are monitored and recorded on CPOMS. • Risk assessments are in place to limit online safety concerns. • Online safety and conduct online policies are communicated with parents and children and children must sign the agreement re internet safety. 		<ul style="list-style-type: none"> • Ensure termly on-line safety assemblies take place and this is followed up in class. • Annual on-line safety parent meetings to be scheduled. • Annual questionnaire for parents re online safety. • SAS Crew to produce a termly online safety update for children.

	<ul style="list-style-type: none"> • Pupil voice is carried out regarding online safety and internet/Computing usage. 		
Forms	<ul style="list-style-type: none"> • Orange concern form - Visitors, caretaker, dinner-time staff and cleaners. • Follow-up concern form • Concern raised by a parent • Concern about a parent • Concern about a member of staff • FC referral form • Prompt sheet for concern form • Prompt sheet for contacting FC • Prompt sheet for completing a referral form. • On-line safety incidents forms and action plans • Bullying action plan • Sexual harmful behaviour plan • Child-on-child abuse risk assessment. • Child-on-child abuse action plans. • Individual behaviour plan • Child at risk from domestic abuse form. • Mental health referral form. • SEND referral form. • Behaviour referral form. • Concerns forms overview • Referral to agencies form • TAC and EHA forms • TAC and EHA overview • Medication forms • Pupil outcomes form - overview of numbers of children in different categories. • Overview of vulnerable children and their area of need. • One page profile - all children to complete in starting school and 		

then reviewed each new year during transition days.

- Inhaler and EpiPen use form
- After school club registration forms and register of attendance.
- Care plans for medical conditions
- Emotional Health and Well-being form.
- Child protection supervision skills template.
- Mental well-being checklist and list of children affected by such issues.
- Behaviour overview of all incidents
- Referral to agencies overview.

